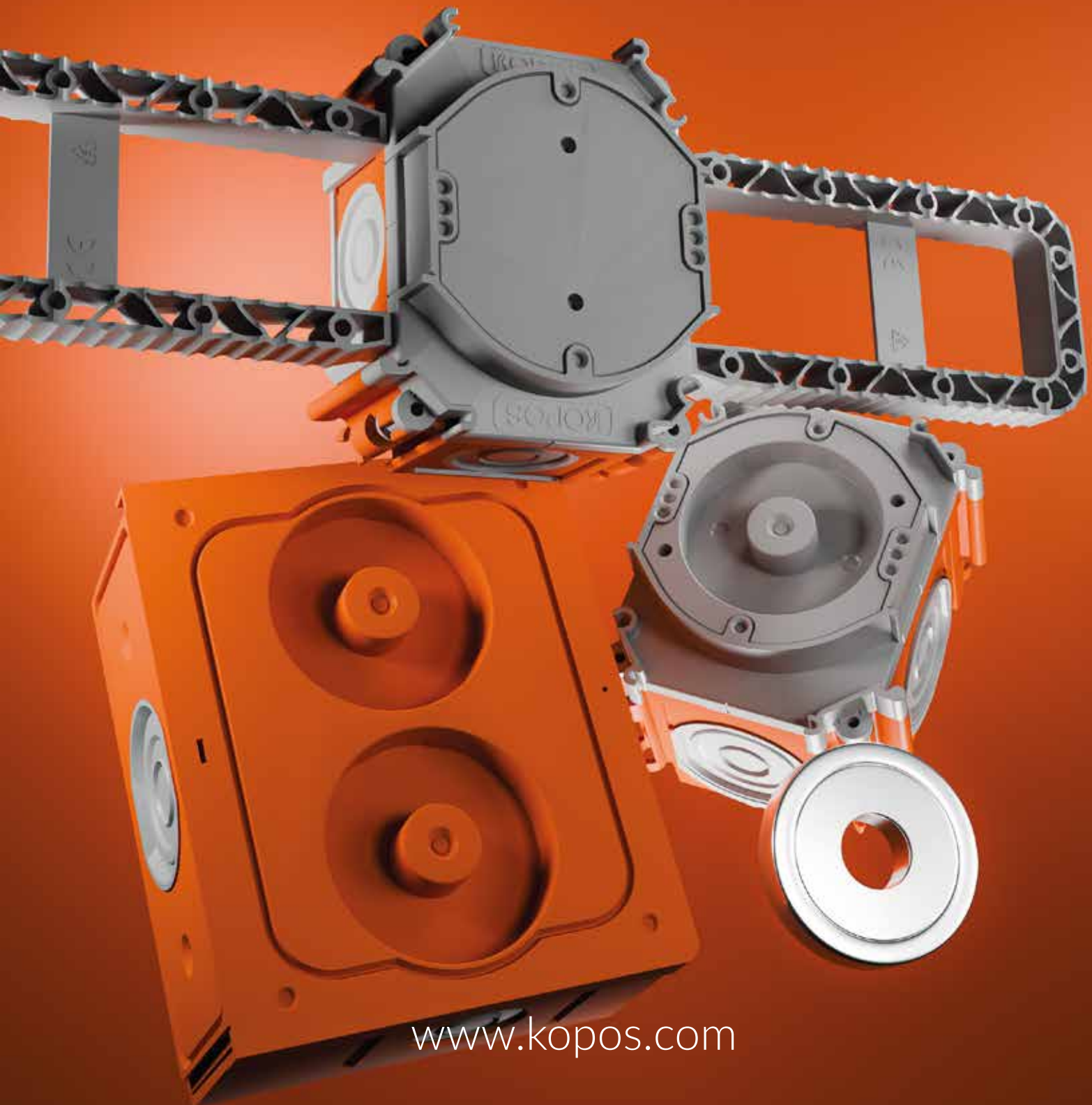


 KOPOS

SYSTEM FOR CONCRETE



www.kopos.com

SYSTEM FOR CONCRETE



- eight types of wiring boxes
- sealed double injection design
- possibility to connect with a spacing of 71 mm for combined device frames and 90 mm for individual device
- the fixing possibility using a magnet, a nail, mounting wings and gluing (depending on the selected type)
- halogen-free
- box and lid set under one item name



SB-M1



SB-P 1



KBP-8



SB-MK 1



SB-ST 1

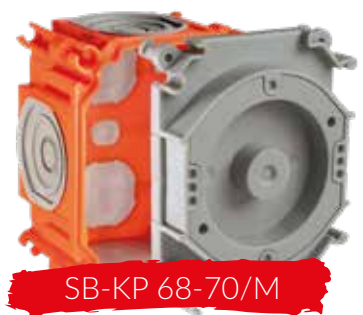


SB-H 50
SB-H 70

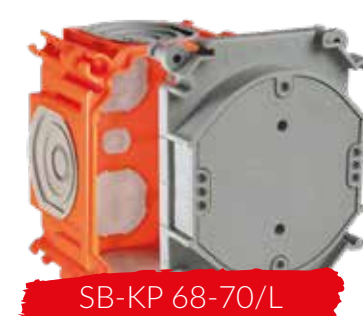
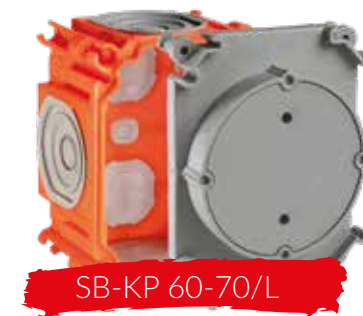
attachment
method



magnet,
nail



nail,
glue

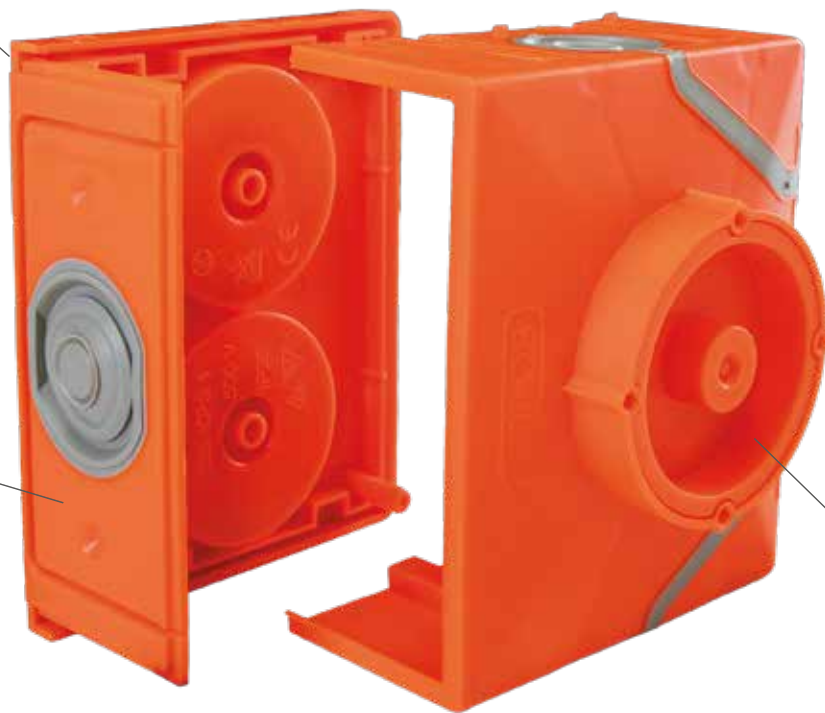


ONE BOX 3 USAGE OPTIONS

a junction
box

a transition box
between the wall and
the ceiling for
prefabricated
concrete parts

a classic device
box with a large
internal space



- the box consists of two parts that snap into each other
- the fixing possibility using a magnet, a nail and mounting wings
- soft entries for the installation of pipes \varnothing 20-25 mm and \varnothing 25-32 mm



SB-M1



SB-MK 1



SB-VKPS 1



V 68

ACCESSORIES



SB-M1

- fixing magnet with holding force 500 N



KBP-8

- steel rod with a diameter of 6 mm for fixing opposite assemblies



SB-P 1

- support for fixing the boxes into the concrete on the opposite side
- the possibility of fixing with a magnet or a nail



SB-MK 1

- flexible mounting wings for direct fixing into the metal formwork
- suitable for armature spacing of 15 to 30 mm or 30 to 50 mm



SB-H 50
SB-H 70

- hook for light fixture
- two lengths according to the chosen depth of the box
- cover included in the package



SB-ST 1

- Ceiling hook support for light fixture
- suitable for all types of boxes



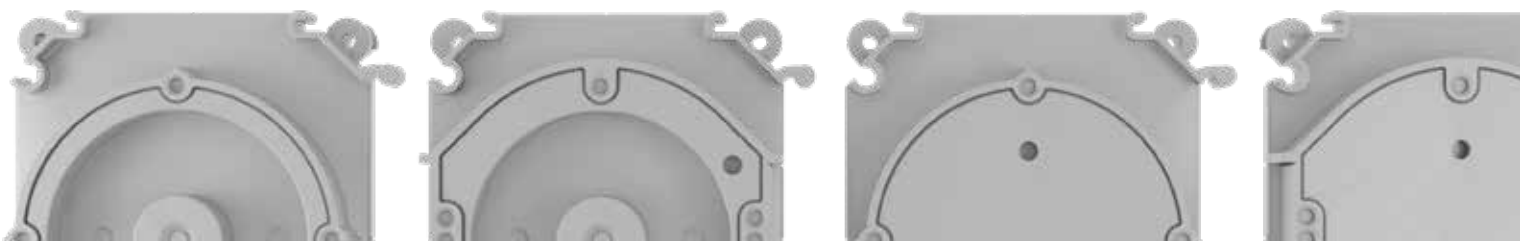
SB-VKPS 1

- for final covering of the junction box SB-KPS 1

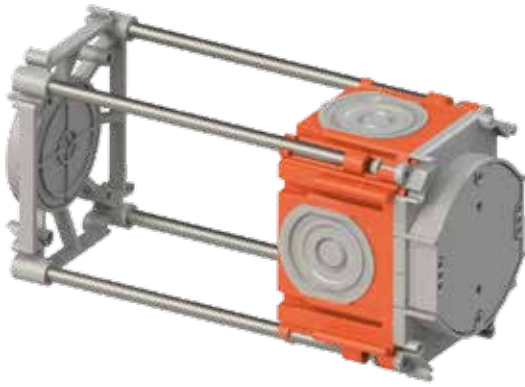


V 68

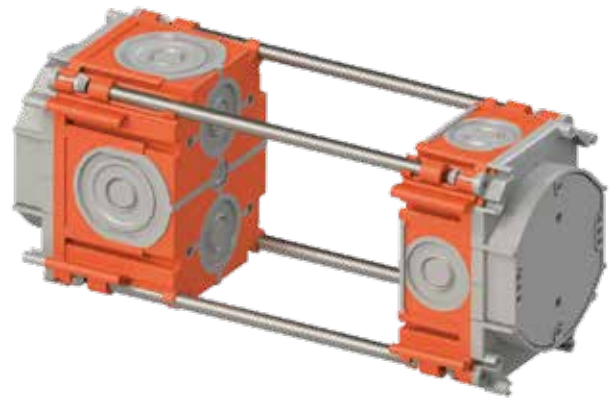
- to cover the boxes with fixing spacing of 60 mm using fastening screws



PRODUCT ASSEMBLY



example of fixing a box using a support and a steel rod with a diameter of 6 mm



example of two-sided installation of wiring boxes using a spacer steel rod with a diameter of 6 mm



example of an assembly for direct mounting onto a metal formwork using the mounting wings

ASSEMBLY INSTRUCTIONS



FOLLOW US
SOCIAL NETWORK

