



ROPOS

**FIRE RATED BOXES AND CABLE CLAMP  
FASTENING WITH K-PULSA\_PO**



# FIRE RATED SYSTEMS

---

Innovative fire rated systems from KOPOS KOLÍN a.s. ensure reliable protection of your buildings and property against unexpected events. Wiring boxes are safe, but also flexible and elegant. We design them with your needs in mind, while emphasizing a design that can be easily integrated into various spaces, whether you need a fire rated system for a residential building, commercial building, or industrial complex. In addition to high-quality products, we also offer expert support and service. Let us protect what is truly valuable to you.





# KPZ FIRE RATED DEVICE BOXES



SUITABLE FOR SOUND-PROOF WALLS  
WITH ATTENUATION UP TO 69 dB

DRILL DIAMETER  
FOR INSTALLATION 73 mm

FOAMING MATERIAL  
ENSURING INTEGRITY  
AND EI 90 INSULATION

HALOGEN FREE  
MATERIAL

MOUNTING AND DEVICE  
SCREWS ARE PART OF THE  
BOX

MULTIPLE  
VARIANTS





# FIRE RATED DEVICE BOXES **KPZ**



KPZ 68-45\_PO



KPZ 68-60\_PO



VIDEO  
TUTORIAL

- Entry holes made of flexible material
- Foaming material outside the box
- Suitable for low-energy and passive houses
- Drill diameter for installation: 73 mm
- mounting screws with two-way thread and plastic feet for quick installation
- box designed for buildings with increased need for protection of persons and property
- complies with standards: ČSN EN 1363-1, ČSN EN 1364-1, ČSN EN 1366-3, ČSN 73 0810

## MULTIPLE VARIANTS



KPZ 68-50/2\_PO



KPZ 68-50/3\_PO



VIDEO  
TUTORIAL



KPZ-1\_PO

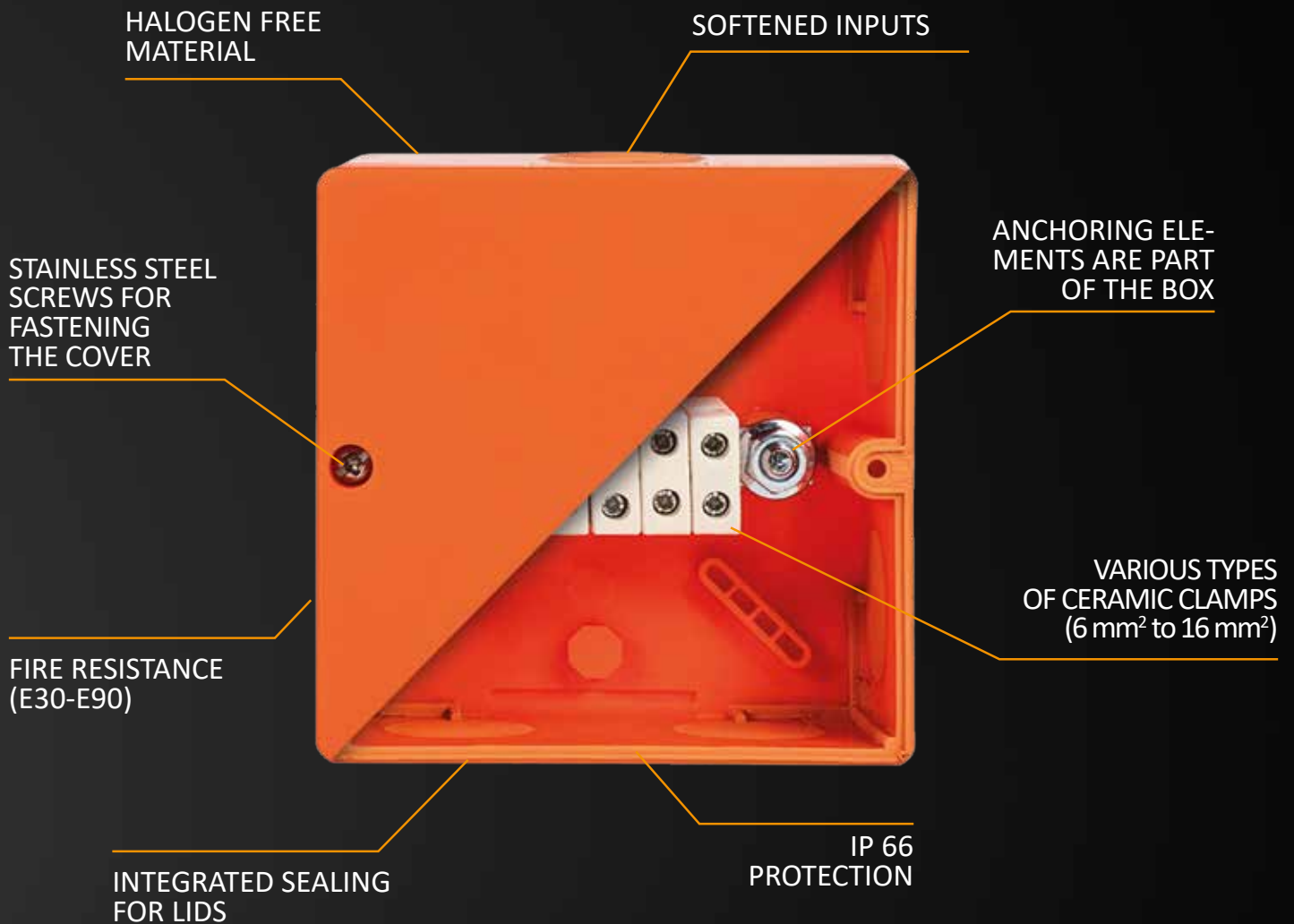
- Entry holes made of flexible material
- Foaming material outside the box
- Suitable for low-energy and passive houses
- Drill diameter for installation: 73 mm
- mounting screws with two-way thread and plastic feet for quick installation
- box designed for buildings with increased need for protection of persons and property
- complies with standards: ČSN EN 1363-1, ČSN EN 1364-1, ČSN EN 1366-3, ČSN 73 0810





# ADVANTAGES OF FIRE RATED KSK BOXES

KSK wiring boxes can conduct electrical current for up to 90 minutes in the event of a fire. They are used to ensure the functionality of systems such as emergency ventilation, escape route lighting, and fire door control. The boxes are used in healthcare facilities, shopping centers, parking lots, and production halls.



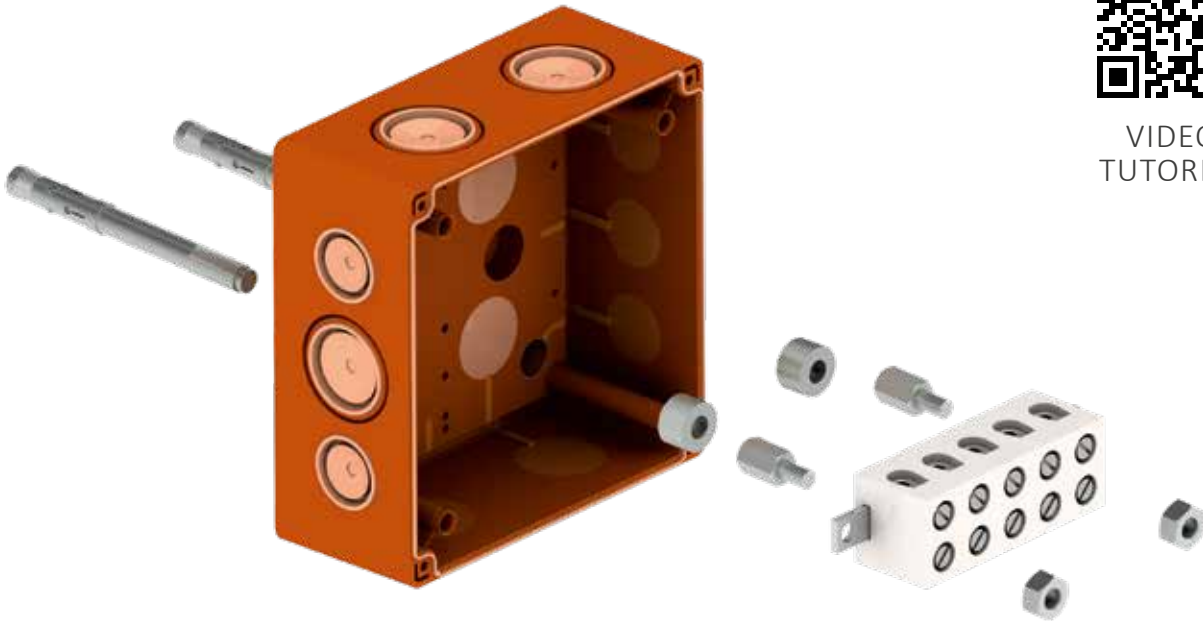


wiring boxes

## KSK WITH SIMPLE CLAMP

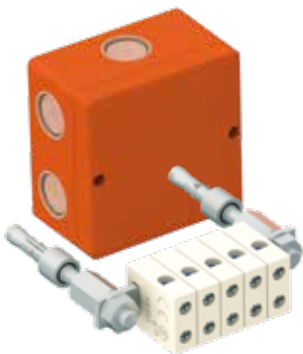


VIDEO  
TUTORIAL



- Softened inputs ensure easy cable passage
- The package includes anchors, stainless steel screws, support posts, a crossbar, and ceramic clamps
- Designed primarily for three-phase installations
- Easy access to clamps thanks to their location on the posts
- Complies with standards: ČSN 73 0895, DIN 4102-12, STN 92 0205

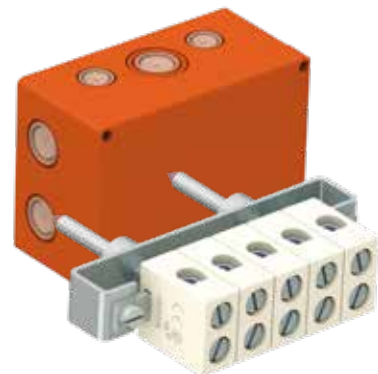
Box Type	Fire Resistance Classification	Box Dimensions (HxWxD)	Number of Ceramic Clamps	Conductors Cross Section
KSK 100_PO	E90, P90-R, PS90	101 x 101 x 63 mm	5 pcs	1,5 - 6 mm <sup>2</sup>
KSK 125_PO10	E90, P90-R, PS90	126 x 126 x 76 mm	5 pcs	1,5 - 10 mm <sup>2</sup>
KSK 175_PO16	E90, P90-R, PS90	176 x 126 x 90 mm	5 pcs	1,5 - 16 mm <sup>2</sup>



KSK 100\_PO



KSK 125\_PO10

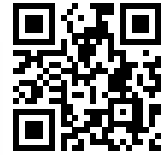


KSK 175\_PO16

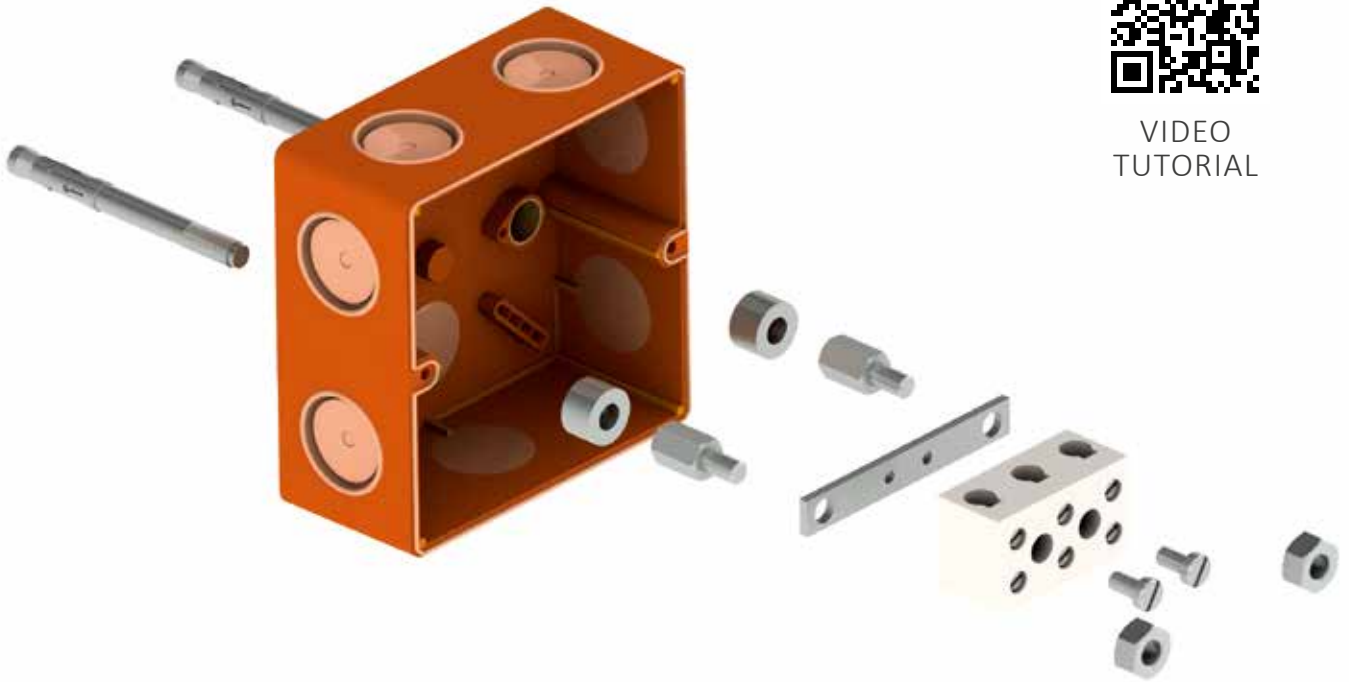


wiring boxes

# KSK FOR SINGLE-PHASE PURPOSES

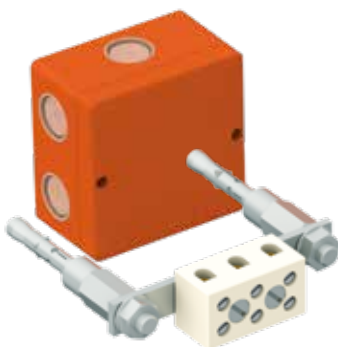


VIDEO TUTORIAL

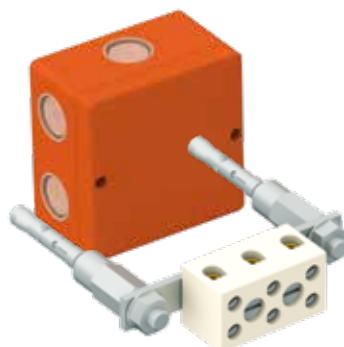


- Softened inputs ensure easy cable passage
- The package includes anchors, stainless steel screws, support posts, a crossbar, and a ceramic clamp
- Designed primarily for single-phase installations
- Easy access to the clamp thanks to its location on the posts
- Complies with standards: ČSN 73 0895, DIN 4102-12, STN 92 0205

Box Type	Fire Resistance Classification	Box Dimensions (HxWxD)	Number of Ceramic Clamps	Conductors Cross Section
KSK 100_PO4J	E90, P90-R, PS90	101 x 101 x 63 mm	1 pcs	1,5 - 4 mm <sup>2</sup>
KSK 100_PO6J	E90, P90-R, PS90	101 x 101 x 63 mm	1 pcs	1,5 - 6 mm <sup>2</sup>
KSK 100_PO10J	E90, P90-R, PS90	101 x 101 x 63 mm	1 pcs	1,5 - 10 mm <sup>2</sup>



KSK 100\_PO4J



KSK 100\_PO6J

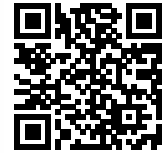


KSK 100\_PO10J

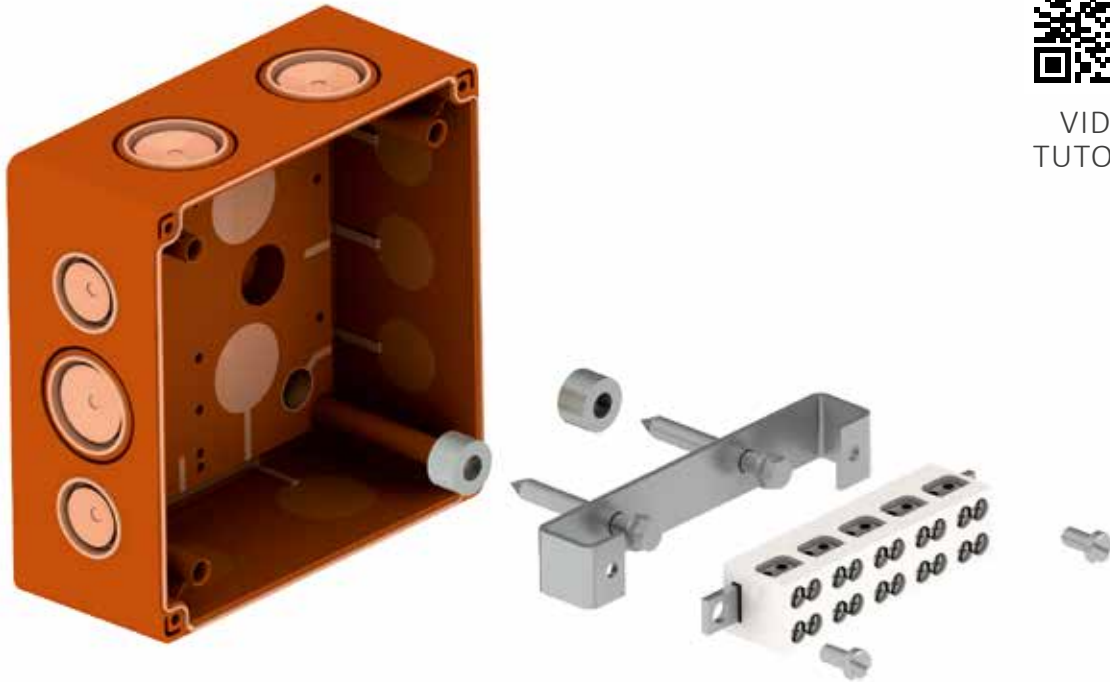


wiring boxes

## KSK WITH A DOUBLE CLAMP



VIDEO TUTORIAL

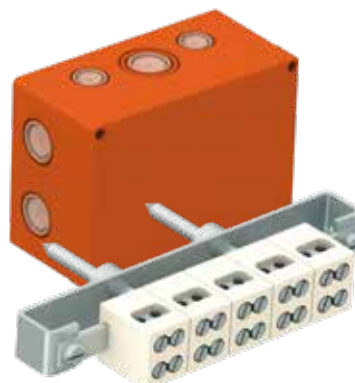


- Soft entries ensure easy cable passage
- The package includes concrete screws, stainless steel screws, support posts, a crossbar, and ceramic clamps
- Easy connection of multiple conductors to a single potential
- Complies with standards: ČSN 73 0895, DIN 4102-12, STN 92 0205

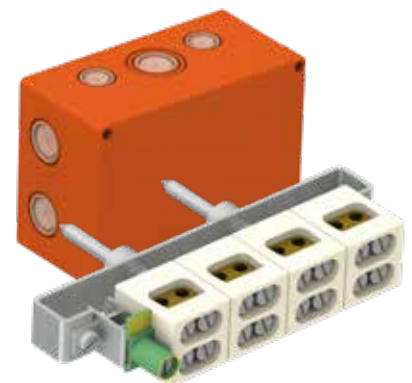
Box Type	Fire Resistance Classification	Box Dimensions (HxWxD)	Number of Ceramic Clamps	Conductors Cross Section
KSK 125_2PO6	E90, P90-R, PS90	126 x 126 x 76 mm	5 pcs	1,5 - 6 mm <sup>2</sup>
KSK 175_2PO10	E90, P90-R, PS90	176 x 126 x 90 mm	5 pcs	1,5 - 10 mm <sup>2</sup>
KSK 175_2PO16	E90, P90-R, PS90	176 x 126 x 90 mm	4 pcs + 1 pcs grounding clamp	1,5 - 16 mm <sup>2</sup>



KSK 125\_2PO6



KSK 175\_2PO10



KSK 175\_2PO16

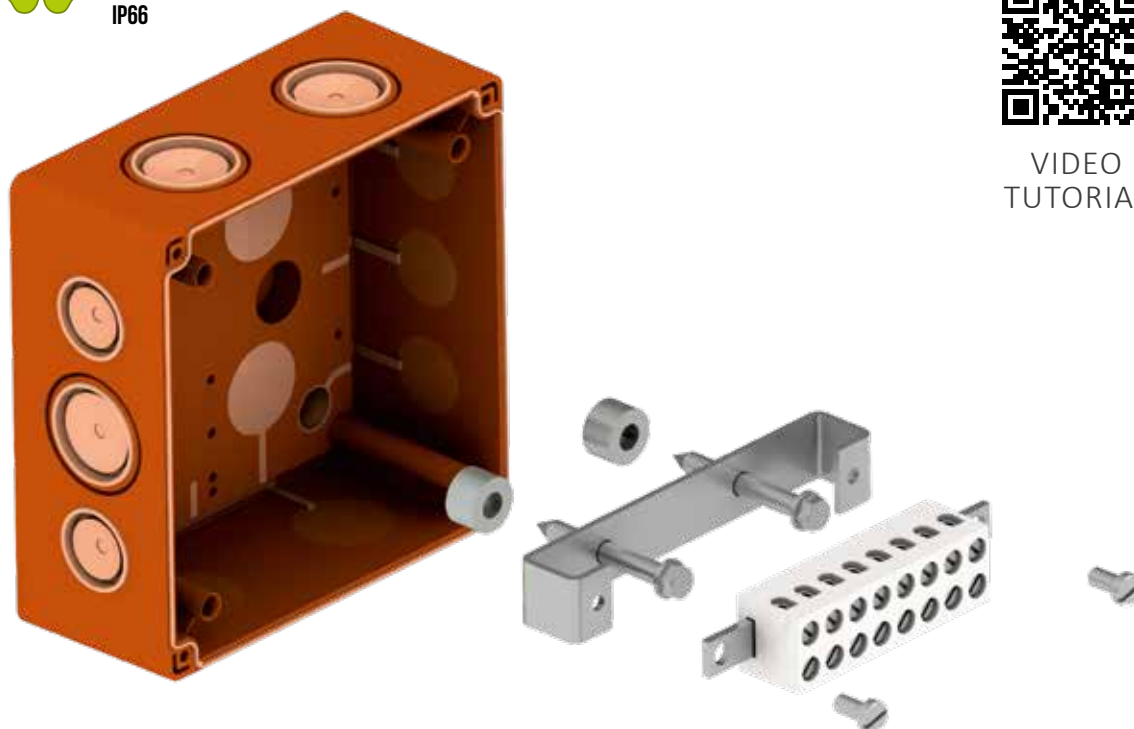


wiring boxes

# KSK FOR DATA PURPOSES

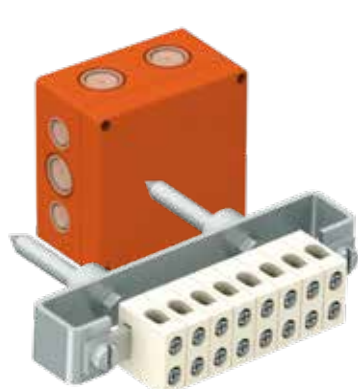


VIDEO  
TUTORIAL

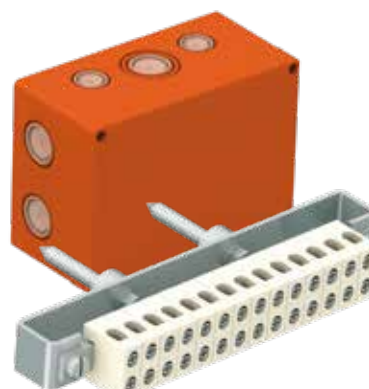


- Softened inputs ensure easy cable passage
- The package includes concrete screws, stainless steel screws, support posts, a crossbar, and ceramic clamps
- Ceramic clamps include a metal plate to protect cable cores
- Complies with standards: ČSN 73 0895, DIN 4102-12, STN 92 0205

Box Type	Fire Resistance Classification	Box Dimensions (HxWxD)	Number of Ceramic Clamps	Conductors Cross Section
KSK 125_DPO	E90, P90-R, PS90	126 x 126 x 76 mm	8 pcs	0,5 - 4 mm <sup>2</sup>
KSK 175_DPO	E90, P90-R, PS90	176 x 126 x 90 mm	14 pcs	0,5 - 4 mm <sup>2</sup>



KSK 125\_DPO



KSK 175\_DPO



wiring boxes

## KSK WITH A FUSE



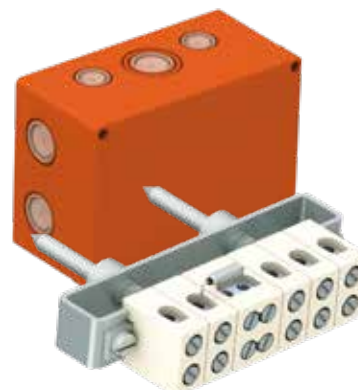
VIDEO TUTORIAL

- Soft inputs ensure easy cable passage
- The package includes concrete screws, stainless steel screws, support posts, a crossbar, ceramic clamps, and a fuse
- Fuse disconnects secondary branch at temperatures that may no longer be safe for the device
- 10 A fuse, cut-off temperature 150 °C
- Protected by utility model
- Complies with standards: ČSN 73 0895, DIN 4102-12, STN 92 0205

Box Type	Fire Resistance Classification	Box Dimensions (HxWxD)	Number of Ceramic Clamps	Conductors Cross Section
KSK 125_PO6P	E90, P90-R, PS90	126 x 126 x 76 mm	5 + 1 pcs (double)	1,5 - 6 mm <sup>2</sup>
KSK 175_PO10P	E90, P90-R, PS90	176 x 126 x 90 mm	5 + 1 pcs (double)	1,5 - 10 mm <sup>2</sup>



KSK 125\_PO6P

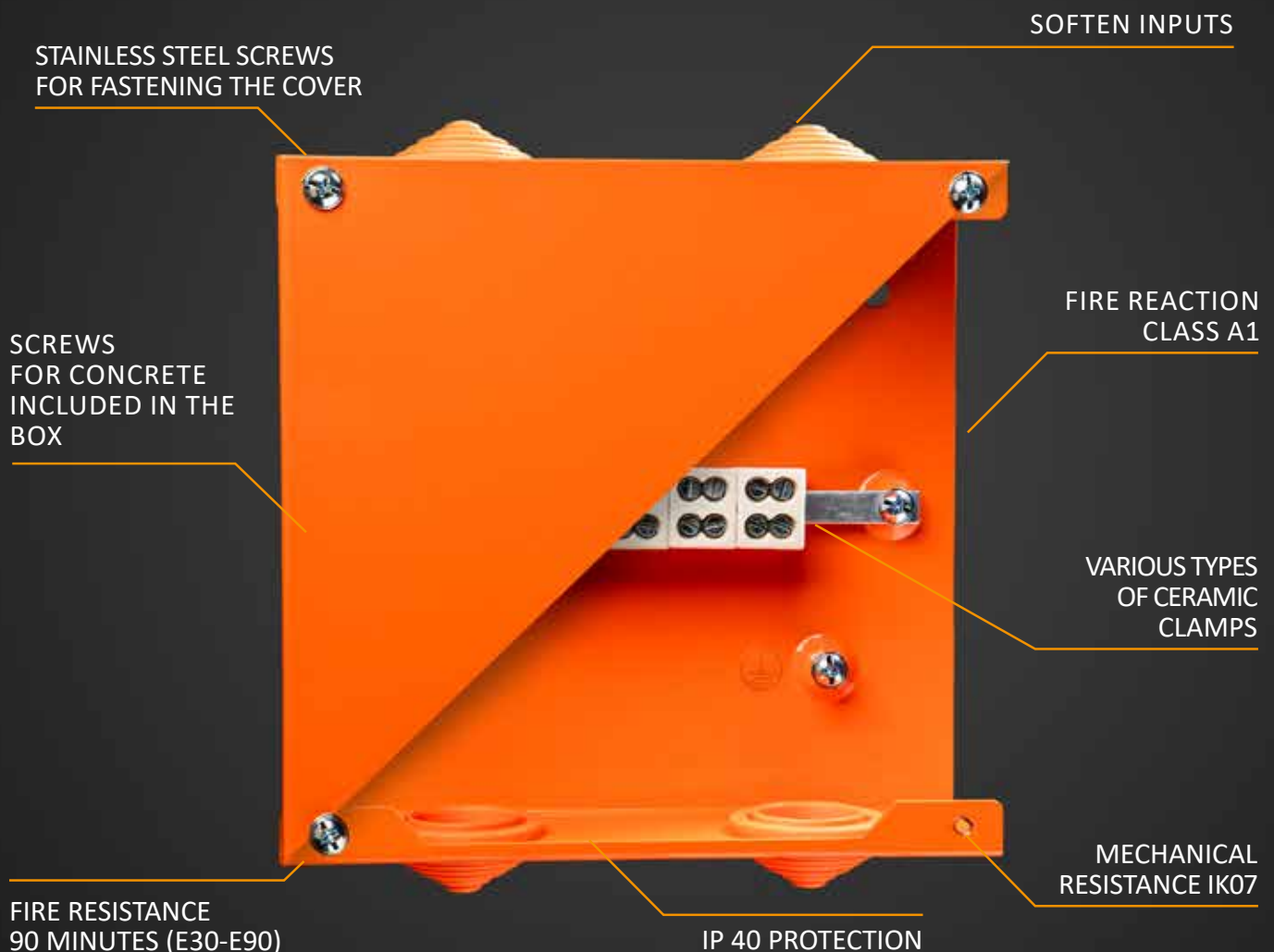


KSK 175\_PO10P

# ADVANTAGES OF FIRE RATED KPK METAL BOXES

KPK metal wiring boxes, which can withstand electrical current for up to 90 minutes in the event of a fire, are key elements to ensuring safety in critical situations. Thanks to their ability to function even at high temperatures, when other common electrical components fail, these boxes are widely used in special applications, including:

- **Emergency ventilation:** To ensure proper ventilation even during a fire, which helps minimize smoke and heat in critical areas.
- **Escape route lighting:** In the event of a power failure or fire, these lights in protected escape routes are crucial for safely leaving the building.
- **Fire door control:** Enables automatic closure of fire doors when a fire is detected, helping to isolate affected areas and prevent the spread of fire.
- **EPS (electronic fire alarm system) power supply:** Ensures that fire detection and alarm systems remain functional even in the event of a fire.



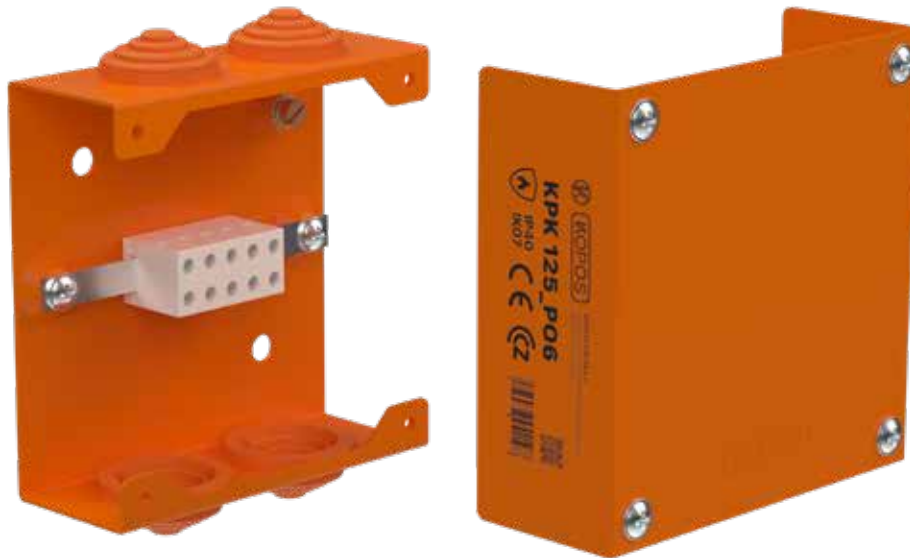


wiring metal boxes

## KPK FOR THREE-PHASE INSTALLATIONS

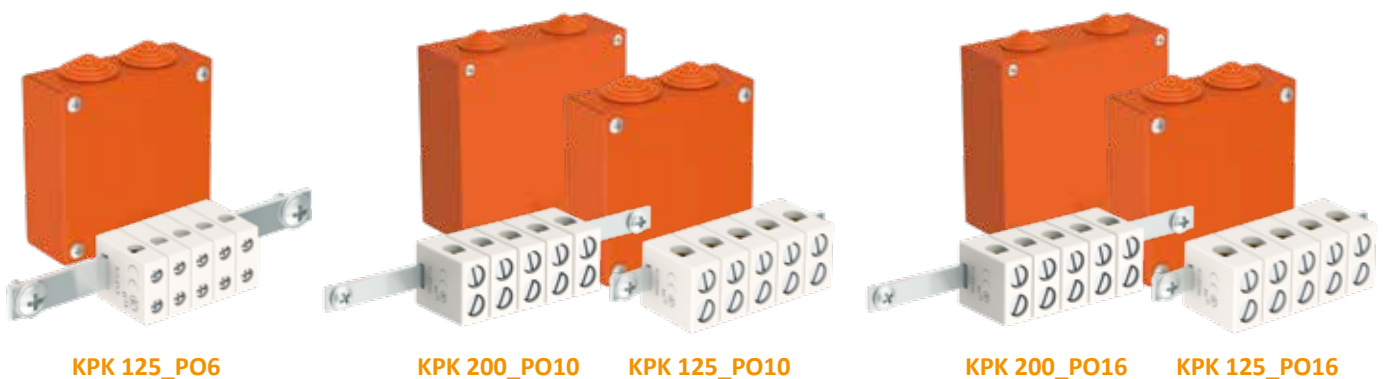


VIDEO TUTORIAL



- Easy cable passage thanks to fitted grommets made of softened halogen-free material
- Package contents: concrete screws, screws for attaching the cover and crossbar, ceramic clamps, brass screw for grounding
- Surface finish: coated with UV-resistant paint
- Complies with standards: ČSN 73 0895, DIN 4102-12, STN 92 0205
- Metal boxes can be nailed with suitable nails

Box Type	Fire Resistance Classification	Box Dimensions (HxWxD)	Number of Ceramic Clamps	Conductors Cross Section
KPK 125_PO6	E90, P90-R, PS90	126 x 126 x 48 mm	5 pcs	1,5 - 6 mm <sup>2</sup>
KPK 125_PO10	E90, P90-R, PS90	126 x 126 x 48 mm	5 pcs	1,5 - 10 mm <sup>2</sup>
KPK 125_PO16	E90, P90-R, PS90	126 x 126 x 48 mm	5 pcs	1,5 - 16 mm <sup>2</sup>
KPK 200_PO10	E90, P90-R, PS90	190 x 203 x 75 mm	5 pcs	1,5 - 10 mm <sup>2</sup>
KPK 200_PO16	E90, P90-R, PS90	190 x 203 x 75 mm	5 pcs	1,5 - 16 mm <sup>2</sup>



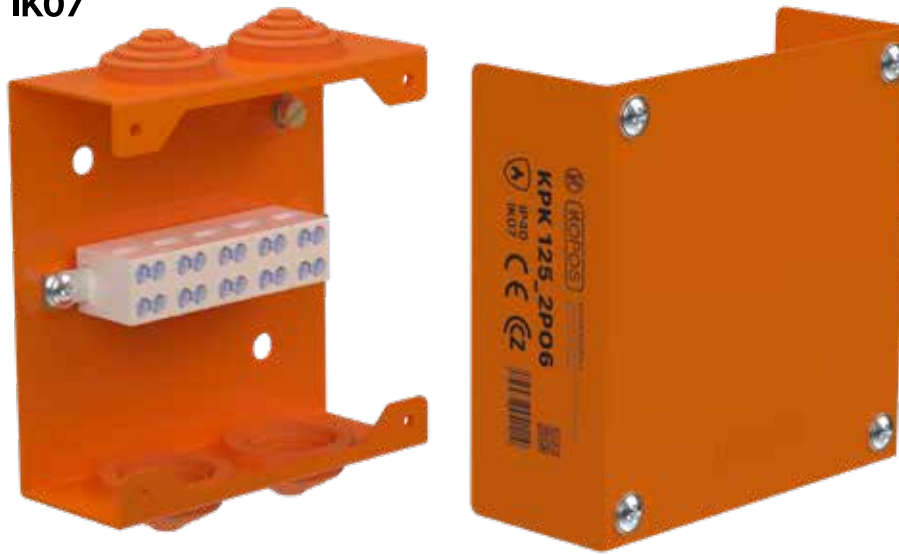


wiring metal boxes

# KPK FOR THREE-PHASE INSTALLATIONS WITH DOUBLE CLAMP



VIDEO TUTORIAL



- Easy cable passage thanks to fitted grommets made of softened halogen-free material
- Package contents: concrete screws, screws for attaching the cover and crossbar, double ceramic clamps, brass screw for grounding
- Surface finish: coated with UV-resistant paint
- Complies with standards: ČSN 73 0895, DIN 4102-12, STN 92 0205
- Metal boxes can be nailed with suitable nails

Box Type	Fire Resistance Classification	Box Dimensions (HxWxD)	Number of Ceramic Clamps	Conductors Cross Section
KPK 125_2PO6	E90, P90-R, PS90	126 x 126 x 48 mm	5 pcs	1,5 - 6 mm <sup>2</sup>
KPK 200_2PO10	E90, P90-R, PS90	190 x 203 x 75 mm	5 pcs	1,5 - 10 mm <sup>2</sup>
KPK 200_2PO16	E90, P90-R, PS90	190 x 203 x 75 mm	5 pcs	1,5 - 16 mm <sup>2</sup>



KPK 125\_2PO6



KPK 200\_2PO10



KPK 200\_2PO16

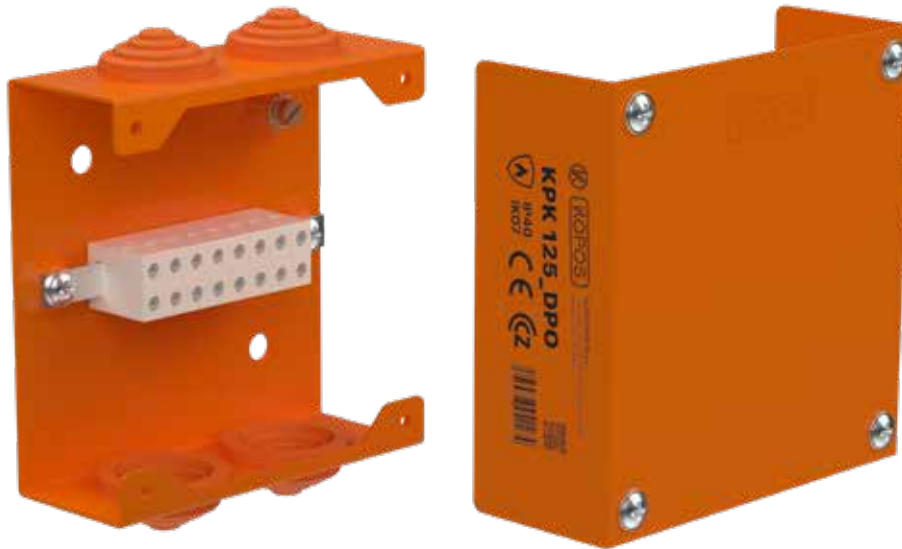


wiring metal boxes

## KPK FOR DISTRIBUTION SYSTEMS



VIDEO  
TUTORIAL

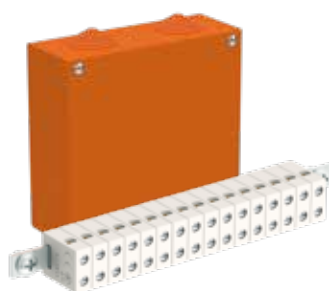


- Easy cable passage thanks to fitted grommets made of softened halogen-free material
- Package contents: concrete screws, screws for attaching the cover and crossbar, ceramic data terminals brass screw for grounding
- Surface finish: coated with UV-resistant paint
- Complies with standards: ČSN 73 0895, DIN 4102-12, STN 92 0205
- Metal boxes can be nailed with suitable nails

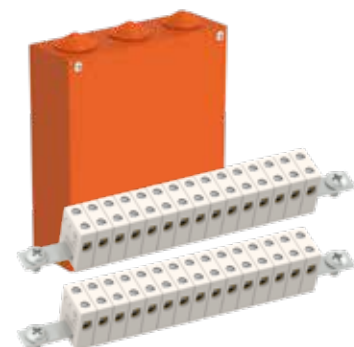
Box Type	Fire Resistance Classification	Box Dimensions (HxWxD)	Number of Ceramic Clamps	Conductors Cross Section
KPK 125_DPO	E90, P90-R, PS90	126 x 126 x 48 mm	8 pcs	0,5 - 4 mm <sup>2</sup>
KPK 200_DPO16	E90, P90-R, PS90	190 x 203 x 75 mm	16 pcs	0,5 - 4 mm <sup>2</sup>
KPK 250_DPO30	E90, P90-R, PS90	223 x 250 x 75 mm	30 pcs	0,5 - 4 mm <sup>2</sup>



KPK 125\_DPO



KPK 200\_DPO16



KPK 250\_DPO30



spare part

# CERAMIC CLAMPS

- Separate ceramic terminals as spare parts for KSK and KPK boxes with functionality in case of fire
- Interchangeability of all terminals, in case that other parameters of KSK boxes remain unchanged
- **Separate ceramic terminals do not form a fire-resistant route**



simple clamps	height (mm)	width (mm)	length (mm)	for cross-section of conductors
KS_PO	25	8,5	20	up to 6 mm <sup>2</sup>
KS_PO10	24	12,6	24	up to 10 mm <sup>2</sup>
KS_PO16	27,5	15	27,5	up to 16 mm <sup>2</sup>

double clamps	height (mm)	width (mm)	length (mm)	for cross-section of conductors
KS_2PO6	25	16	20	2 cables up to 6 mm <sup>2</sup>
KS_2PO10	25	24	20	2 cables up to 10 mm <sup>2</sup>
KS_2PO16	33	28	33	2 cables up to 16 mm <sup>2</sup>

simple clamps	height (mm)	width (mm)	length (mm)	for cross-section of conductors
KS_PO4J	16	18	33	up to 4 mm <sup>2</sup>
KS_PO6J	18	19	36	up to 6 mm <sup>2</sup>
KS_PO10J	20	21	36	up to 10 mm <sup>2</sup>

data terminal	height (mm)	width (mm)	length (mm)	for cross-section of conductors
KS_DPO	25	8,5	20	up to 4 mm <sup>2</sup>

grounding clamp	height (mm)	width (mm)	length (mm)	for cross-section of conductors
KSPE_PO	41,6	11,5	16	up to 25 mm <sup>2</sup>

# THERMAL FUSE

TP\_PO



- possibility of equipping KSK and KPK boxes with multiple fuses, in case that the other parameters of the boxes remain unchanged
- current load 10 A, thermal load max. 150 °C

# K-PULSA\_PO



**1** SETTING THE DEPTH OF THE NAIL IN THE MATERIAL

**2** NAIL GUIDE WITH MAGNETIC ATTACHMENT OPTION

**3** NAILER CERTIFICATION: EN 12549, EN ISO 11148-13 E

**4** LOW WEIGHT OF THE GUN, ONLY 3.4 KG

**5** MAGAZINE FOR 20 NAILS

**6** SUPPORT FOOT ENSURES PERPENDICULARITY OF THE SHOT INTO THE MATERIAL

**7** GAS FILL LEVEL AND BATTERY CHARGE INDICATOR

**8** LITHIUM-ION TECHNOLOGY CAPACITY 2.9 AH

**9** BATTERY CAPACITY UP TO 10,000 SHOTS

**10** GAS CARTRIDGE CAPACITY UP TO 750 SHOTS

**11** IMPACT FORCE AT FIRE 95 J



gas nail gun

# K-PULSA\_PO



The gas nail gun ensures maximum comfort for installers when nailing fire-resistant clamps. Its compact and slim shape is also ideal for working close to corners and in narrow spaces. The nails are always supplied with a gas cartridge. The accessories are certified according to ČSN 73 0895 for up to 90 minutes in case of fire.



## Accessories

### PACKAGE OF NAILS WITH GAS CARTRIDGE

for concrete C20/25 to C60/70, prestressed concrete and steel



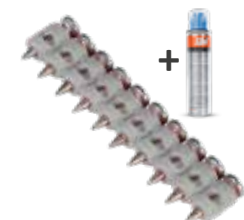
item	MOQ	length (mm)
KHO HC6-15_PO	500 pcs	15
KHO HC6-17_PO	500 pcs	17
KHO HC6-22_PO	500 pcs	22

for concrete C20/25 to C30/37, solid masonry



item	MOQ	length (mm)
KHB C6-20_PO	500 pcs	20
KHB C6-25_PO	500 pcs	25

residue-free, for concrete C20/25 to C30/37, steel



item	MOQ	length (mm)
KHO HC6-15FH_PO	500 pcs	15
KHO HC6-17FH_PO	500 pcs	17
KHO HC6-22FH_PO	500 pcs	22

**MAGNETIC ATTACHMENT**  
MVH P800\_PO



**GAS CARTRIDGE**  
PLYN\_PO

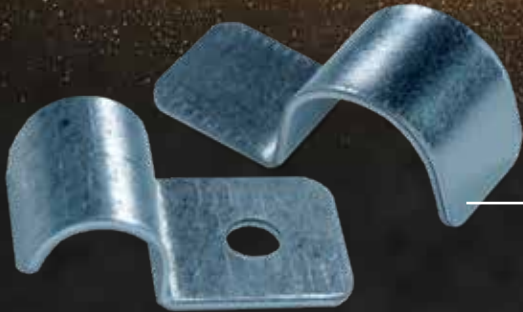


**MAGNET FOR NAIL SHOOTING**  
MAGNET\_PO





# **FIRE RESISTANT CLAMPS**



**SINGLE-SIDED**

**DOUBLE-SIDED**





accessories

# CABLE CLAMPS

designed for nail shooting



K-Pulsa\_PO

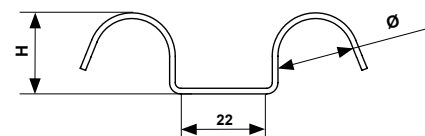
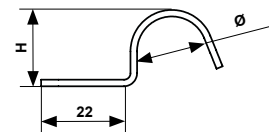
- Single-sided clamps are designed for cables with a diameter of 6 mm to 25 mm
- Double-sided clips are designed for cables with a diameter of 8 mm to 16 mm
- For standard and non-standard routes
- Surface finishes: continuous zinc coating or zinc micro-lamellas

single-sided clamps	Ø clamp	H (mm)	Ø cable (mm)
6706_PO	6	7,2	4 - 6
6708_PO	8	9,2	6 - 8
6710_PO	10	11,2	8 - 10
6712_PO	12	13,2	10 - 12
6714_PO	14	15,2	12 - 14
6716E_PO	16	17,2	14 - 16
6718_PO	18	19,5	16 - 18
6720_PO	20	21,5	18 - 20
6722_PO	22	23,5	20 - 22
6725_PO	25	26,5	23 - 25

double-sided clamps	Ø clamp	H (mm)	Ø cable (mm)
6708D_PO	8	9	6 - 8
6710D_PO	10	11	8 - 10
6712D_PO	12	13,2	10 - 12
6716ED_PO	16	17,2	12 - 14

double-sided clamps without a hole	Ø clamp	H (mm)	Ø cable (mm)
6708D_POBD	8	9	6 - 8
6710D_POBD	10	11	8 - 10
6712D_POBD	12	13,2	10 - 12

single-sided clamps without a hole	Ø clamp	H (mm)	Ø cable (mm)
6706_POBD	6	7,2	4 - 6
6708_POBD	8	9,2	6 - 8
6710_POBD	10	11,2	8 - 10
6712_POBD	12	13,2	10 - 12
6714_POBD	14	15,2	12 - 14
6716E_POBD	16	17,2	14 - 16
6718_POBD	18	19,5	16 - 18
6720_POBD	20	21,5	18 - 20
6722_POBD	22	23,5	20 - 22
6725_POBD	25	26,5	23 - 25





accessories

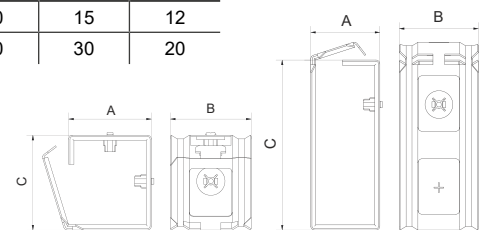
# FOR NAIL SHOOTING

## GROUP BRACKETS



- bracket for quick mounting of cables on walls or ceilings by nail shooting
- allows easy addition of routes and installation of cables of various diameters
- maximum load capacity 4.8 kg/m, recommended bracket spacing 300 – 600 mm

Item No.	A (mm)	B (mm)	C (mm)	Max. number of cables inserted		
				Ø6	Ø8	Ø10
SD 1_PO	47	40	41	30	15	12
SD 3_PO	35	40	87	40	30	20

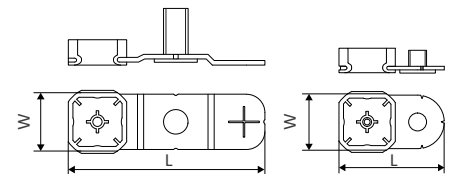


## HANGERS



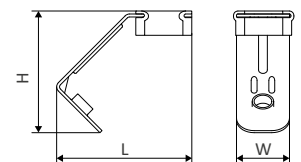
- metal hanger with internal thread M6/M8 for DOBRMAN and OMEGA clamps
- application by nail shooting into the ceiling
- ideal for mounting in concrete or solid masonry

Item No.	thread type	Load (kg)	L (mm)	W (mm)
UVD 6_PO	M6	30	36	20,5
UVD 8_PO	M6	50	65	20,5

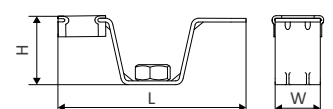


- Metal hanger for anchoring threaded rods to the ceiling with a plastic part for easy one-handed installation
- Designed for mounting in concrete or solid masonry

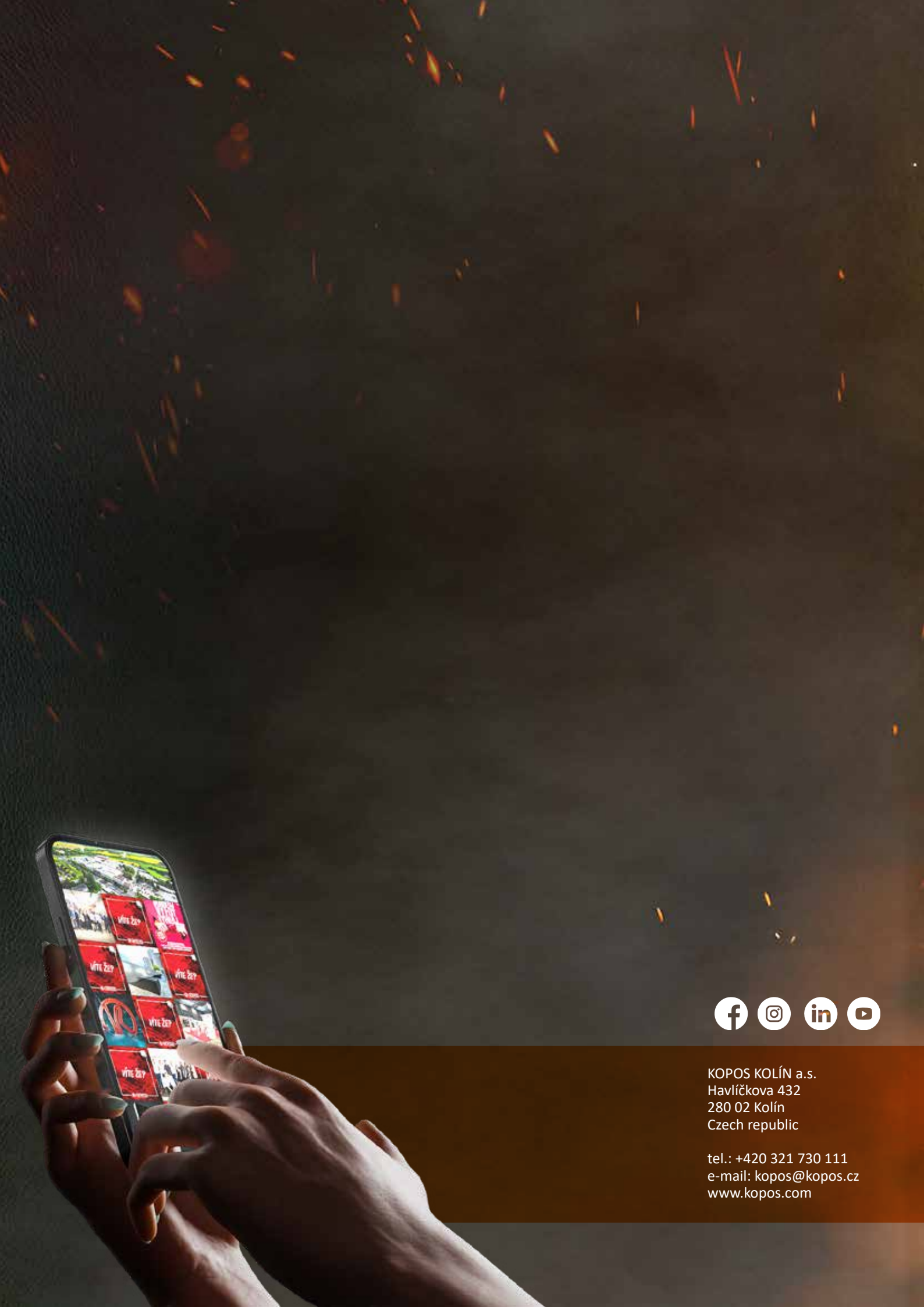
Item No.	thread type	Load (kg)	H (mm)	L (mm)	W (mm)
ZZT 6_PO	M6	30	41	46	18



Item No.	thread type	Load (kg)	H (mm)	L (mm)	W (mm)
ZZT 8_PO	M8	50	26,5	75	18







KOPOS KOLÍN a.s.  
Havlíčková 432  
280 02 Kolín  
Czech republic

tel.: +420 321 730 111  
e-mail: [kopos@kopos.cz](mailto:kopos@kopos.cz)  
[www.kopos.com](http://www.kopos.com)