

FIRE  
RATED  
BOXES



KROPOS



# FIRE RATED SYSTEMS

---

With our innovative fire-rated systems from KOPOS KOLÍN a.s., you gain the confidence of reliable protection of your objects and property against unexpected fire threats. The systems are not only secure, but also flexible and elegant. We come up with products that reflect your needs in mind while emphasizing design that is easily integrated within different spaces. Regardless of whether you need a fire rated system for residential building, commercial building or industrial complex. KOPOS KOLÍN a.s. puts emphasis on sustainability. Our fire rated systems are designed with respect to the environment and meet the latest environmental standards. In addition to quality products, we also offer professional support and service. Let us protect what has real value for you.

[www.kopos.com](http://www.kopos.com)

# KPZ

## FIRE RATED DEVICE BOXES

HALOGEN-FREE  
MATERIAL

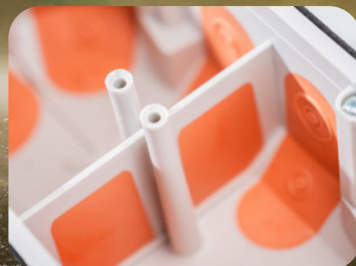
SOUNDPROOFING WALLS WITH  
ATTENUATION UP TO 69 dB

MOUNTING AND DEVICE  
SCREWS ARE PART OF BOX

DRILL DIAMETER FOR  
INSTALLATION 73 mm

FOAMING MATERIAL  
ENSURES THE ENTIRETY  
AND EI 90 INSULATION IN  
CASE OF FIRE

MULTIPLE  
VARIANTS





# FIRE RATED DEVICE BOXES **KPZ**



KPZ 68-45\_PO



KPZ 68-60\_PO



VIDEO TUTORIAL

- in case of fire, it ensures the integrity of the partition and thus prevents the spread of fire for up to 90 minutes (EI 15 - EI 90)
- entrance holes made of flexible material
- fireproof material outside the box
- drill diameter for installation 73 mm
- soundproof box (sound insulation up to 69 dB)
- mounting screws equipped with two-way thread with plastic feet for quick installation
- the box is intended for objects with an increased need for protection of persons and property
- meets standards: ČSN EN 1363-1, ČSN EN 1364-1, ČSN EN 1366-3, ČSN 73 0810

## MULTIPLE VARIANTS



KPZ 68-50/2\_PO



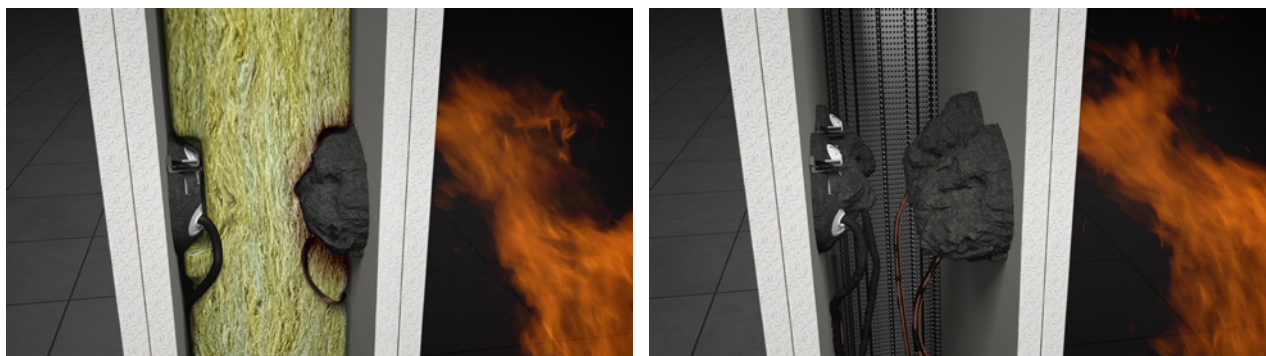
KPZ 68-50/3\_PO

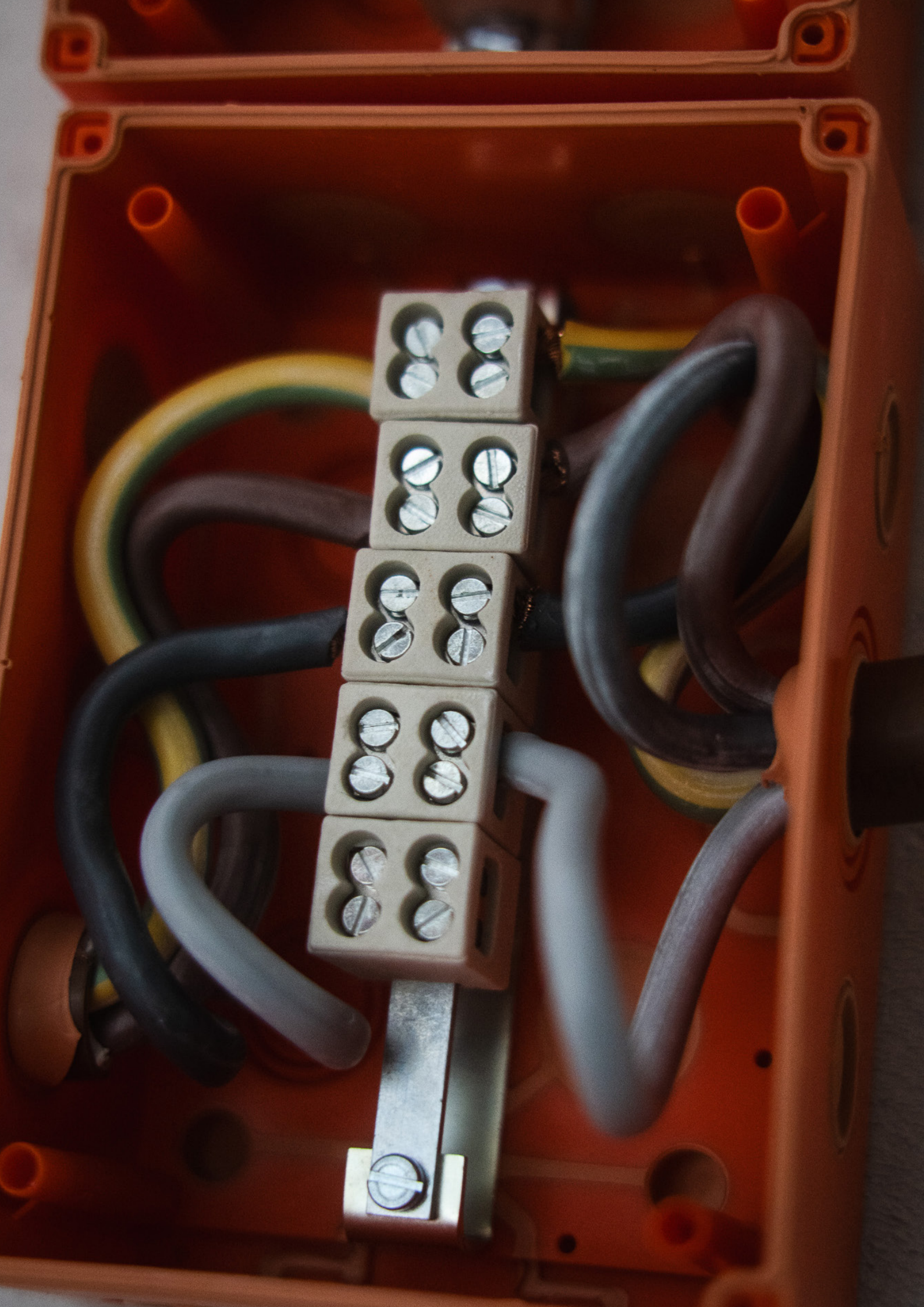


VIDEO  
TUTORIAL

KPZ-1\_PO

- in case of fire, it ensures the integrity of the partition and thus prevents the spread of fire for up to 120 minutes (EI 15 - EI 120)
- installed device and mounting screws
- entrance holes made of flexible material
- foaming material outside and inside the box
- soundproof box (sound insulation up to 69 dB)
- suitable for low-energy and passive houses
- the Golden Flame award
- meets standards: ČSN EN 1363-1, ČSN EN 1364-1, ČSN EN 1366-3, ČSN 73 0810

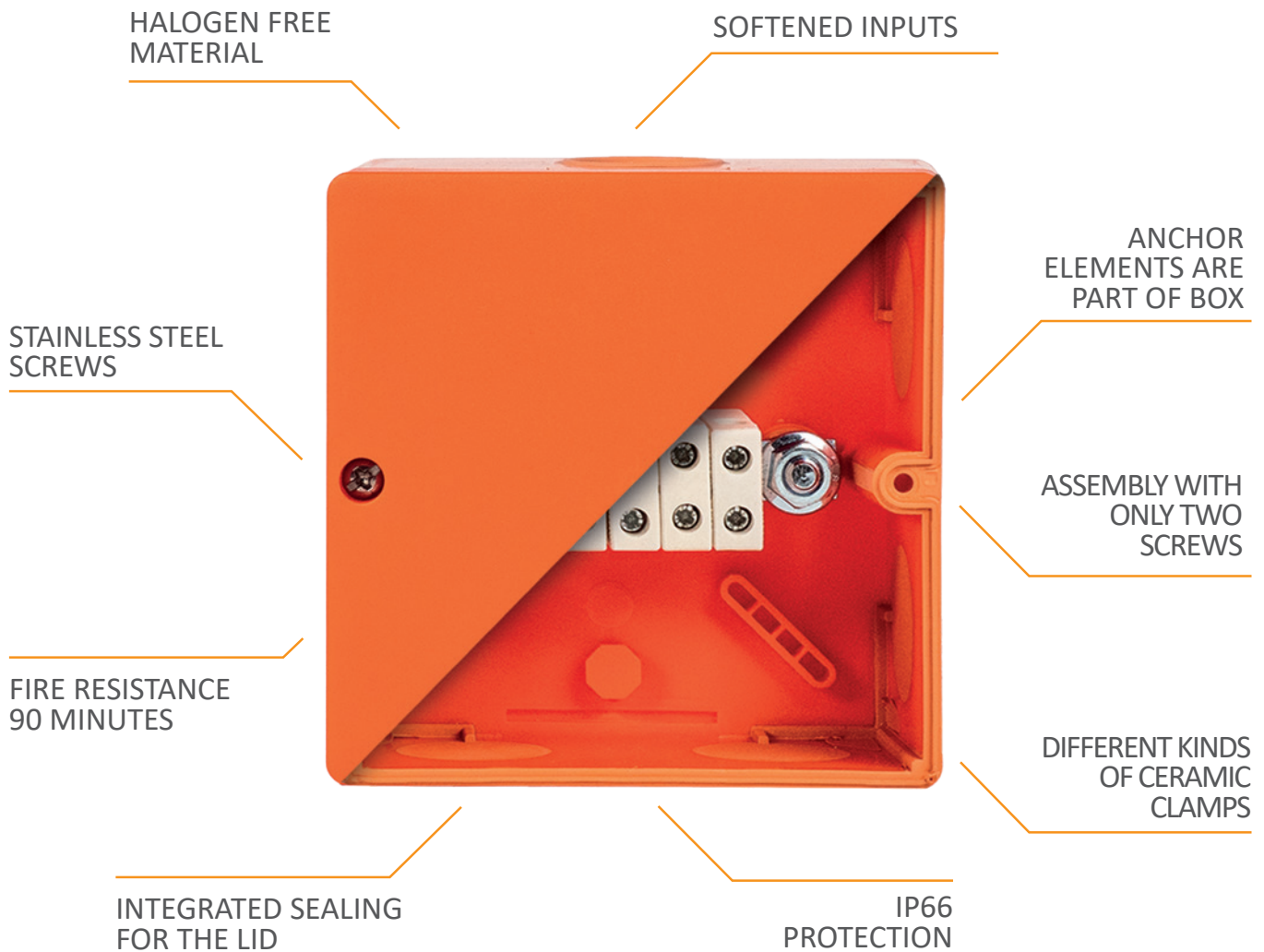






# ADVANTAGES OF FIRE RATED BOXES

In case of fire, the KSK wiring boxes can conduct electricity for up to 90 minutes. They are used to ensure the functionality of e.g. emergency ventilation, escape routes, lighting or fire doors control. The boxes are used in medical facilities, shopping centers, parking spaces or production halls.



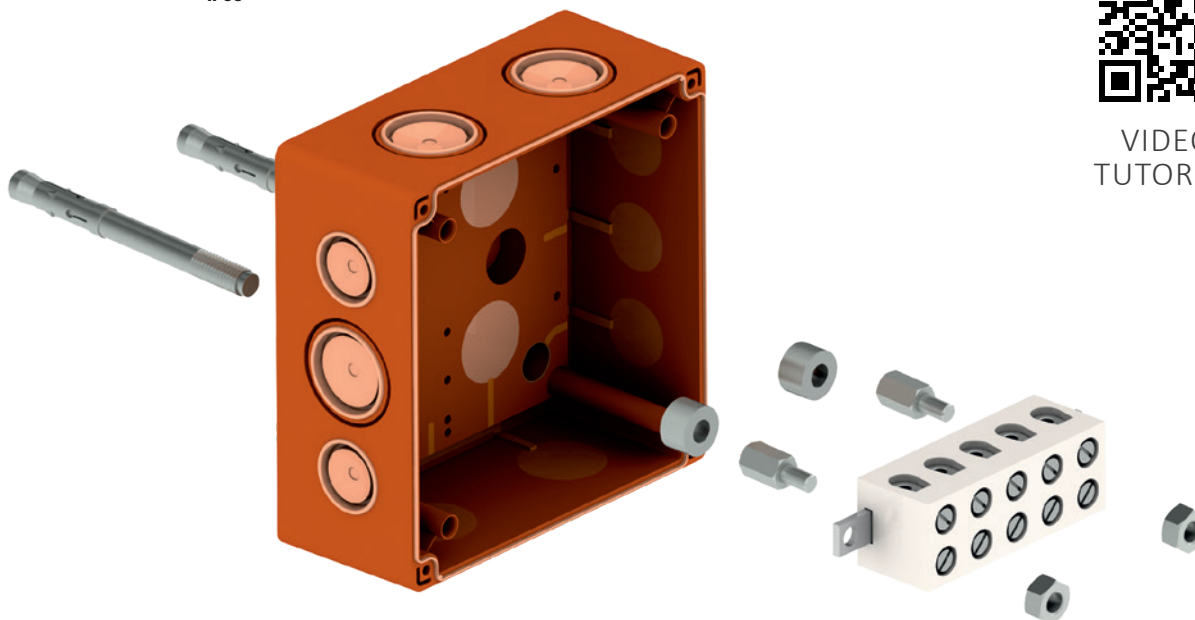


wiring boxes

## KSK WITH A SIMPLE CLAMP

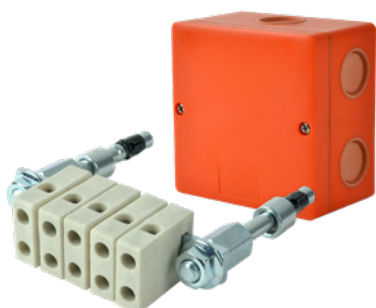


VIDEO  
TUTORIAL

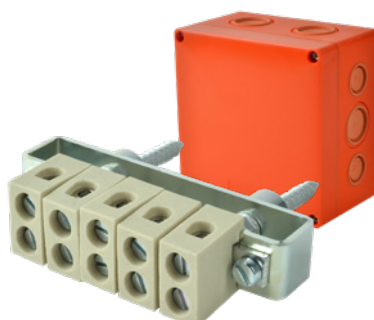


- softened inputs ensure easy passage of cables
- the package includes anchors, stainless steel screws, support posts, crossbar, ceramic clamps
- designed mainly for three-phase installations
- easy access to the terminals thanks to the placement on the posts
- meets standards: ČSN 73 0895, DIN 4102-12, STN 92 0205

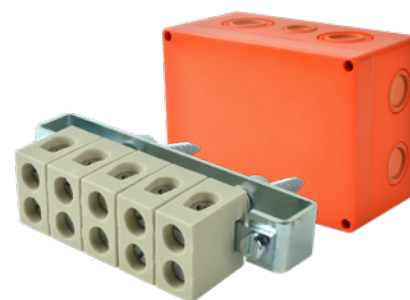
Box type	Fire resistance classification	Box dimensions (HxWxD)	Number of ceramic clamps	Conductors cross section
KSK 100_PO	E90, P90-R, PS90	101 x 101 x 63 mm	5 pcs	1,5 - 6 mm <sup>2</sup>
KSK 125_PO10	E90, P90-R, PS90	126 x 126 x 76 mm	5 pcs	1,5 - 10 mm <sup>2</sup>
KSK 175_PO16	E90, P90-R, PS90	176 x 126 x 90 mm	5 pcs	1,5 - 16 mm <sup>2</sup>



KSK 100\_PO



KSK 125\_PO10



KSK 175\_PO16



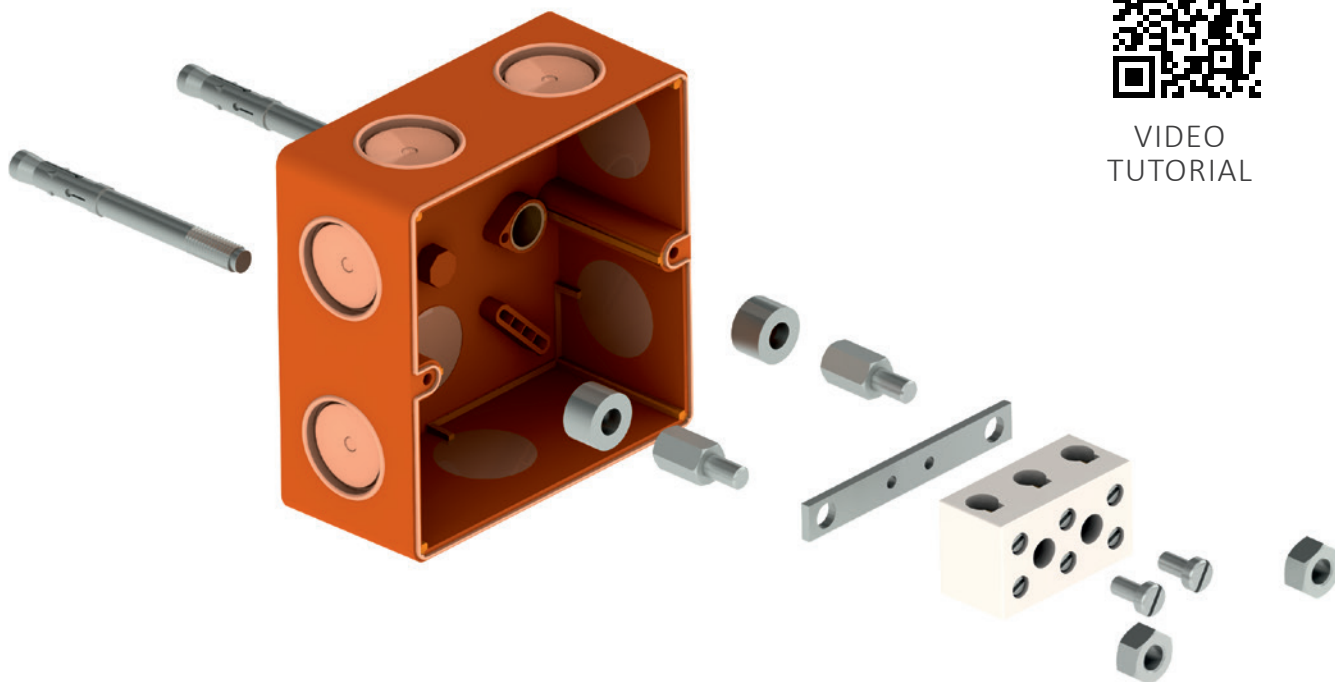


wiring boxes

# KSK FOR SINGLE-PHASE PURPOSES



VIDEO  
TUTORIAL

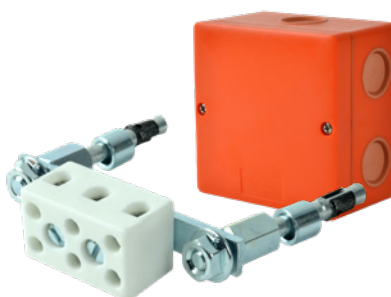


- softened inputs ensure easy passage of cables
- the package includes anchors, stainless steel screws, support posts, crossbar, ceramic clamp
- designed mainly for single-phase installations
- easy access to the clamp thanks to the placement on the posts
- meets standards: ČSN 73 0895, DIN 4102-12, STN 92 0205

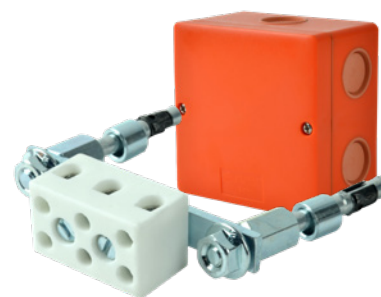
Box type	Fire resistance classification	Box dimensions (HxWxD)	Number of ceramic clamps	Conductors cross section
KSK 100_PO4J	E90, P90-R, PS90	101 x 101 x 63 mm	1 pcs	1,5 - 4 mm <sup>2</sup>
KSK 100_PO6J	E90, P90-R, PS90	101 x 101 x 63 mm	1 pcs	1,5 - 6 mm <sup>2</sup>
KSK 100_PO10J	E90, P90-R, PS90	101 x 101 x 63 mm	1 pcs	1,5 - 10 mm <sup>2</sup>



KSK 100\_PO4J



KSK 100\_PO6J



KSK 100\_PO10J

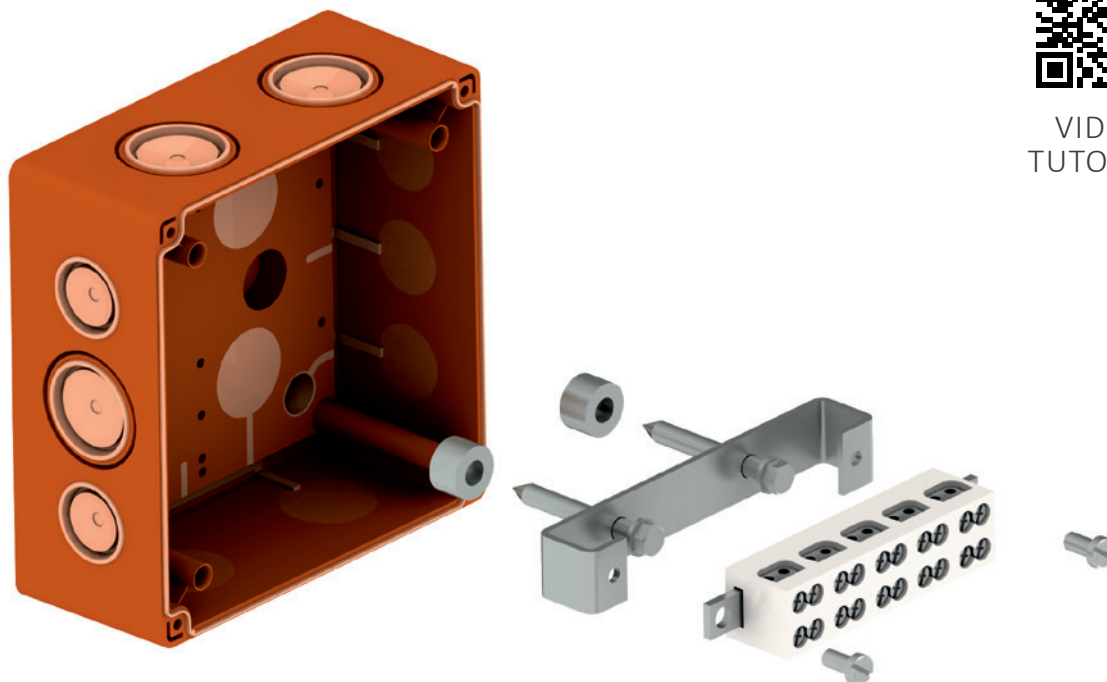


wiring boxes

# KSK WITH A DOUBLE CLAMP

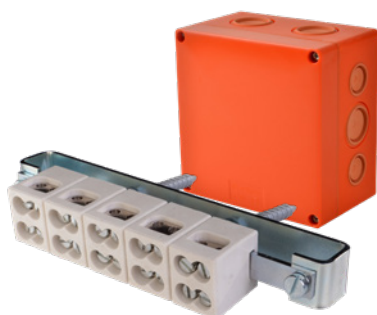


VIDEO TUTORIAL

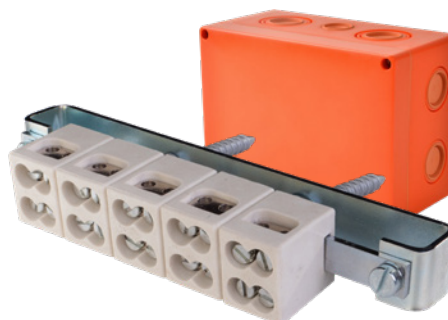


- softened inputs ensure easy passage of cables
- concrete screws, stainless steel screws, support posts, crossbar, ceramic clamps are part of the package
- the possibility of easy connection of multiple wires to one potential
- meets standards: ČSN 73 0895, DIN 4102-12, STN 92 0205

Box type	Fire resistance classification	Box dimensions (HxWxD)	Number of ceramic clamps	Conductors cross section
KSK 125_2PO6	E90, P90-R, PS90	126 x 126 x 76 mm	5 pcs	1,5 - 6 mm <sup>2</sup>
KSK 175_2PO10	E90, P90-R, PS90	176 x 126 x 90 mm	5 pcs	1,5 - 10 mm <sup>2</sup>



KSK 125\_2PO6



KSK 175\_2PO10

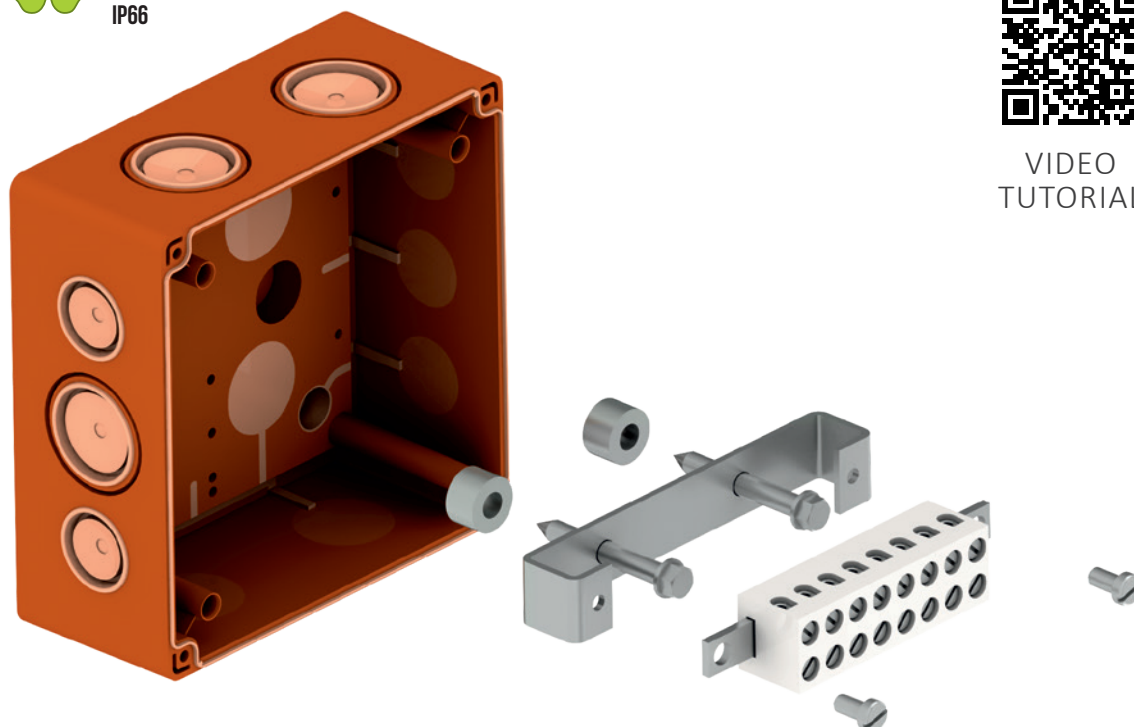


wiring boxes

# KSK FOR DATA PURPOSES

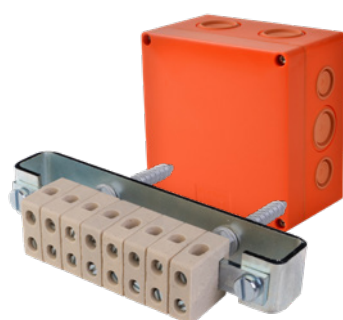


VIDEO  
TUTORIAL

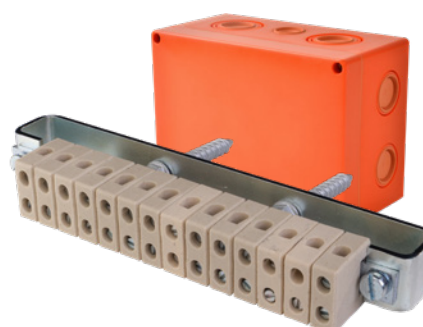


- softened inputs ensure easy passage of cables
- concrete screws, stainless steel screws, support posts, crossbar, ceramic clamps are part of the package
- ceramic clamps contain a plate to protect the cores of the cables
- meets standards: ČSN 73 0895, DIN 4102-12, STN 92 0205

Box type	Fire resistance classification	Box dimensions (HxWxD)	Number of ceramic clamps	Conductors cross section
KSK 125_DPO	E90, P90-R, PS90	126 x 126 x 76 mm	8 pcs	0,5 - 4 mm <sup>2</sup>
KSK 175_DPO	E90, P90-R, PS90	176 x 126 x 90 mm	14 pcs	0,5 - 4 mm <sup>2</sup>



KSK 125\_DPO

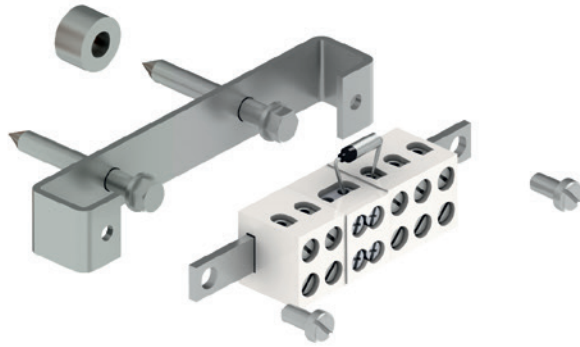
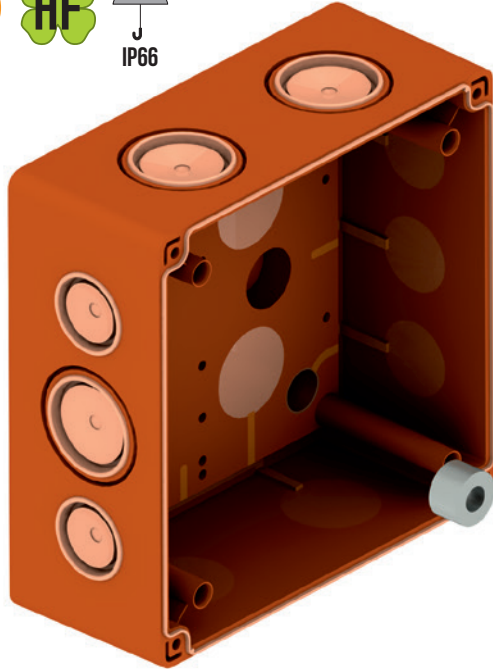


KSK 175\_DPO



wiring boxes

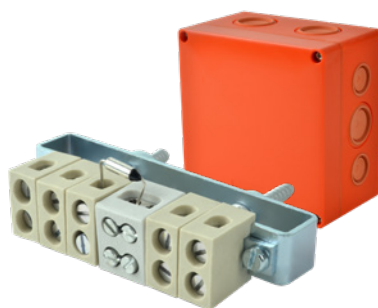
## KSK WITH A FUSE



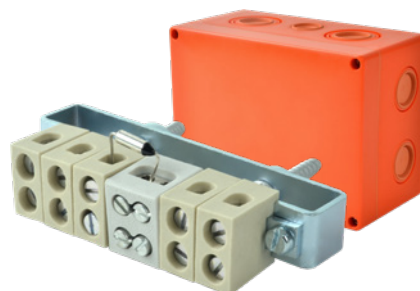
VIDEO  
TUTORIAL

- softened inputs ensure easy passage of cables
- the package includes concrete screws, stainless steel screws, support posts, a crossbar, ceramic clamps, a fuse
- in the event of a fault, the fuse ensures the disconnection of the secondary branch at a temperature that may no longer be safe for the device
- fuse 10 A, interruption temperature 150 °C
- protected by a utility model
- meets standards: ČSN 73 0895, DIN 4102-12, STN 92 0205

Box type	Fire resistance classification	Box dimensions (HxWxD)	Number of ceramic clamps	Conductors cross section
KSK 125_PO6P	E90, P90-R, PS90	126 x 126 x 76 mm	5 + 1 pcs (double)	1,5 - 6 mm <sup>2</sup>
KSK 175_PO10P	E90, P90-R, PS90	176 x 126 x 90 mm	5 + 1 pcs (double)	1,5 - 10 mm <sup>2</sup>



KSK 125\_PO6P



KSK 175\_PO10P



spare part

# CERAMIC CLAMP

- separate ceramic clamps as a spare part for KSK boxes with fire functionality
- interchangeability of all clamps, provided that the other parameters of the KSK boxes do not change
- **separate ceramic clamps do not form a fire-resistant route**



simple clamps	height (mm)	width (mm)	leght (mm)	for conductors cross-section
KS_PO	25	8,5	20	to 6 mm <sup>2</sup>
KS_PO10	24	12,6	24	to 10 mm <sup>2</sup>
KS_PO16	27,5	15	27,5	to 16 mm <sup>2</sup>



double clamps	height (mm)	width (mm)	leght (mm)	for conductors cross-section
KS_2PO6	25	16	20	2 cables to 6 mm <sup>2</sup>
KS_2PO10	25	24	20	2 cables to 10 mm <sup>2</sup>
KS_2PO16	33	28	33	2 cables to 16 mm <sup>2</sup>



simple clamps	height (mm)	width (mm)	leght (mm)	for conductors cross-section
KS_PO4J	16	18	33	to 4 mm <sup>2</sup>
KS_PO6J	18	19	36	to 6 mm <sup>2</sup>
KS_PO10J	20	21	36	to 10 mm <sup>2</sup>

# THERMAL FUSE

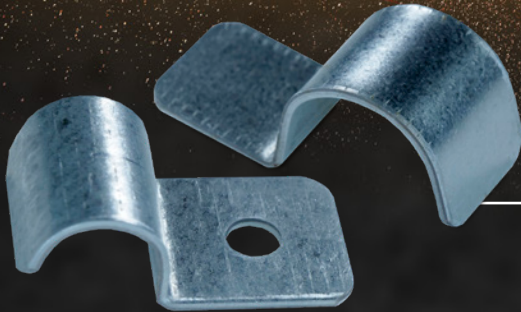
TP\_PO



- the possibility of equipping the KSK box with more fuses, provided that the other parameters of the boxes do not change
- current load 10A, heat load max. 150°C

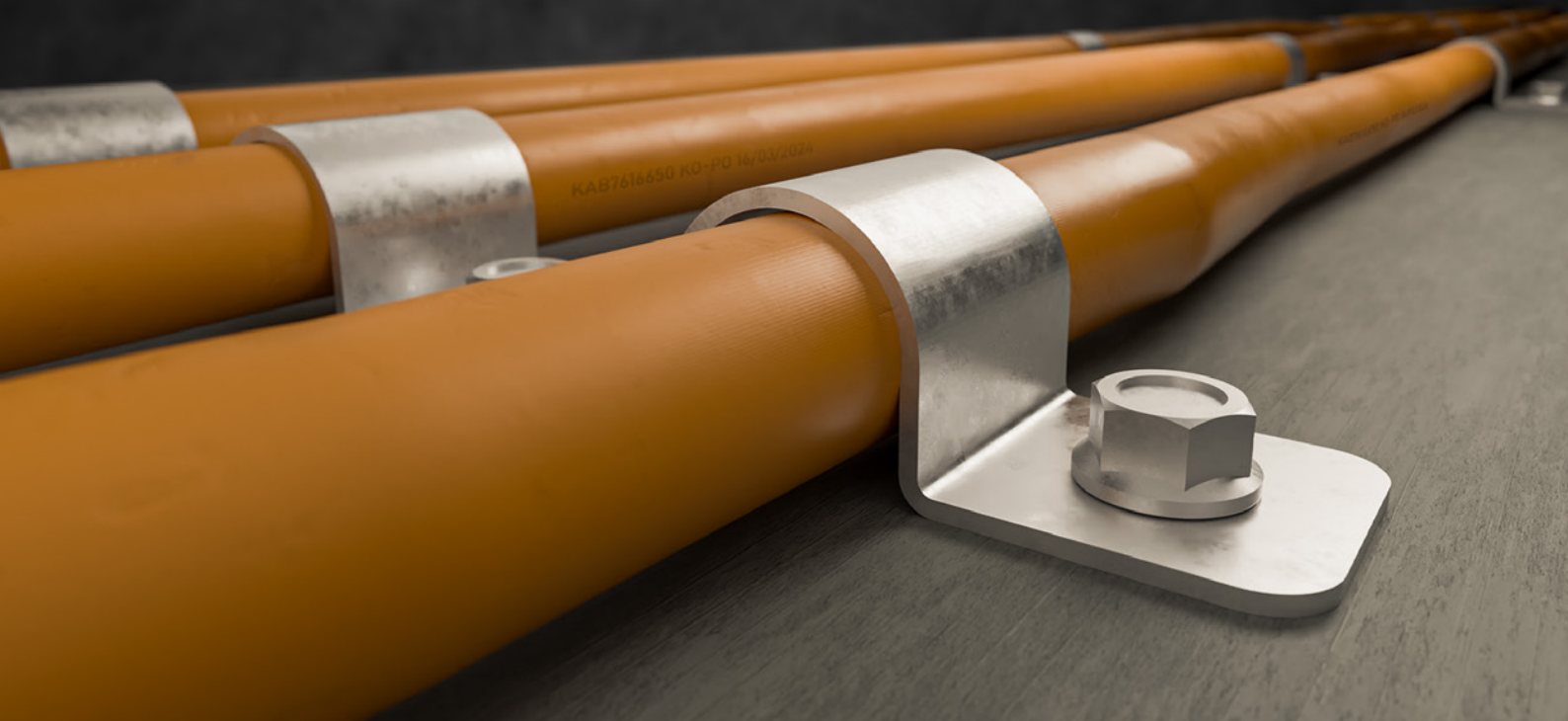


# **FIRE RATED CLAMPS**



**SINGLE SIDED**

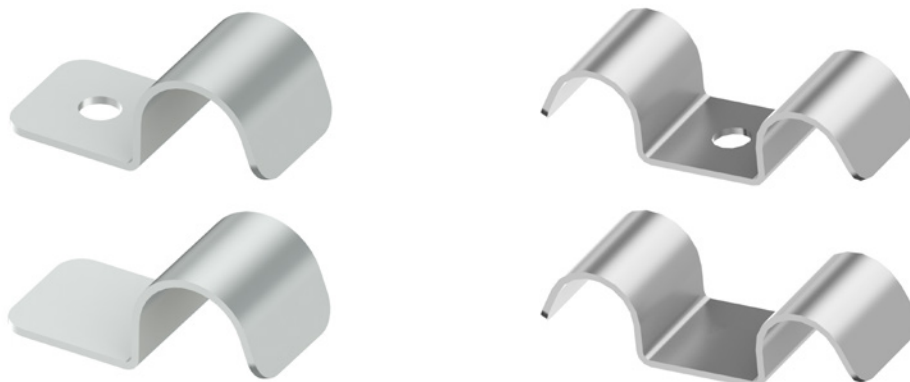
**DOUBLE SIDED**





accessories

# CABLE CLAMPS



- single sided clamps are designed for cables with a diameter of min. 6 mm and max. 25 mm
- double sided clamps for cables with a diameter of min. 8 mm and max. 16 mm
- for standard and non-standard routes
- clamps without a hole can be nailed on
- the possibility of supplying clamps also in electro-galvanized surface treatment
- suitable for outdoor and indoor use

single sided clamps	Ø clamps	H (mm)
6706_PO	6	7,2
6708_PO	8	9,2
6710_PO	10	11,2
6712_PO	12	13,2
6714_PO	14	15,2
6716E_PO	16	17,2
6718_PO	18	19,5
6720_PO	20	21,5
6722_PO	22	23,5
6725_PO	25	26,5

double sided clamps	Ø clamps	H (mm)
6708D_PO	8	9
6710D_PO	10	11
6712D_PO	12	13,2
6716ED_PO	16	17,2

double sided clamps without a hole	Ø clamps	H (mm)
6708D_POBD	8	9
6710D_POBD	10	11
6712D_POBD	12	13,2

single sided clamps without a hole	Ø clamps	H (mm)
6706_POBD	6	7,2
6708_POBD	8	9,2
6710_POBD	10	11,2
6712_POBD	12	13,2
6714_POBD	14	15,2
6716E_POBD	16	17,2
6718_POBD	18	19,5
6720_POBD	20	21,5
6722_POBD	22	23,5
6725_POBD	25	26,5



K-Pulsa\_PO

KOPOS KOLÍN a.s.  
Havlíčková 432  
280 02 Kolín  
Czech Republic

tel.: +420 321 730 111  
e-mail: [kopos@kopos.cz](mailto:kopos@kopos.cz)  
[www.kopos.com](http://www.kopos.com)

