



KOPOS



WIRING TRUNKINGS
AND CHANNELS



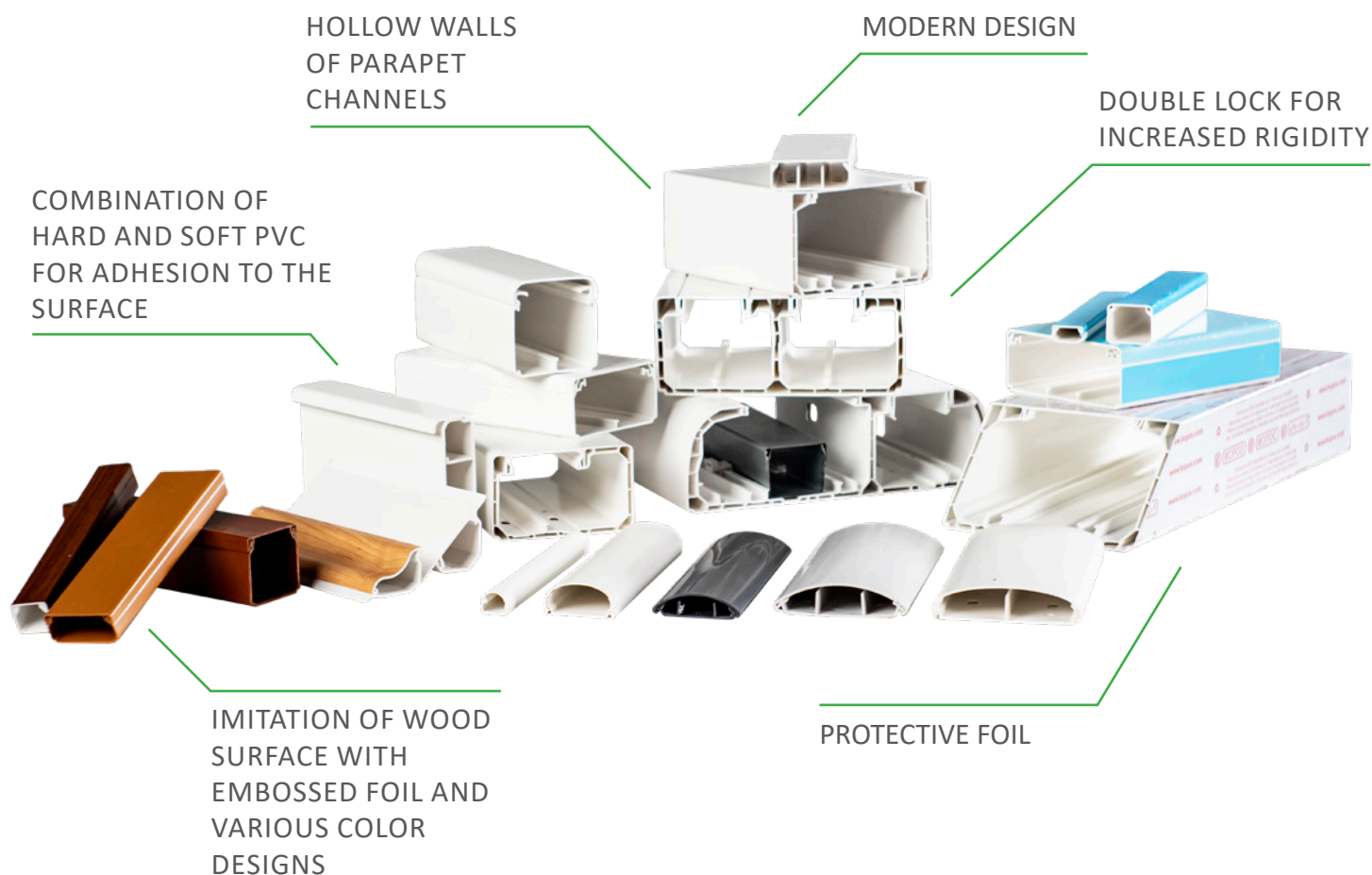
YOU STAND FOR OUR SUCCESS.

New technologies guarantee the improvement and innovation of our products. For you.



ELEKTROINSTALAČNÍ LIŠTY A KANÁLY

Wiring trunkings are made of PVC or PC / ABS for indoor use. They are designed for low voltage distribution. As standard, they are produced in white color corresponding to RAL 9003. The trunkings equipped with a double lock are characterized by increased rigidity and a stronger holding of the lid by the lock. Lids are included. Protected by foil against damage and dirt as standard. Approved for Explosive Environments 2 and 22. The trunkings marked with the letters „HF“ are made of halogen-free material and are therefore suitable for areas with regard to the safety of persons and property in the event of a fire.





PARAPET CHANNELS

for classical instruments

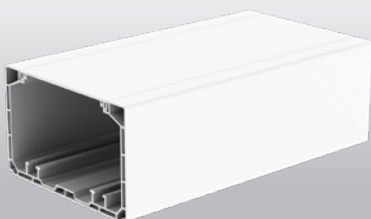


KP 80 PK

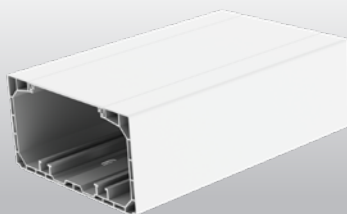


- designed for classical instruments with an axial spacing of 71 mm
- same lid 80 mm - same snap-on instrument box KP 80 PK
- compatibility with the original KP PK box
- large lids for comfortable covering of joints - the inner and outer corner covers are variable for non-perpendicular wall corners

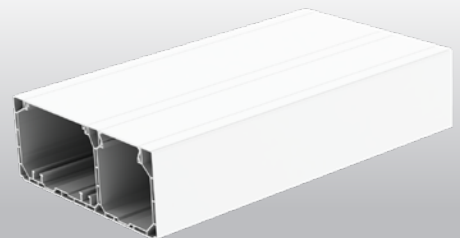
channel	end	connecting	bending	branching	inner corner	outer corner	grommet
PK 110X65 D (HF)	8211 (HF)	8212 (HF)	8213 (HF)	8214 (HF)	8215 (HF)	8216 (HF)	8217 (HF)
PK 130X65 D	8221	8222	8223	8224	8225	8226	8227
PK 170X65 D (HF)	8231 (HF)	8232 (HF)	8232 (HF)	8232 (HF)	8232 (HF)	8232 (HF)	8232 (HF)



PK 110X65 D



PK 130X65 D



PK 170X65 D

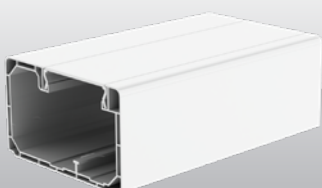
PARAPET CHANNELS

for modular devices

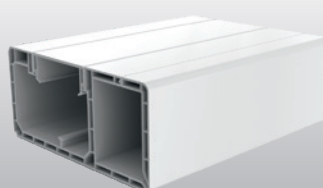


- designed for modular devices 45x45 mm or 45x22,5 mm
- without instrument boxes - snap the device into place of the lid
- Sortiment of KOPOS modular devices - data and power
- large lids for comfortable covering of joints - the inner and outer corner covers are variable for non-perpendicular wall corners

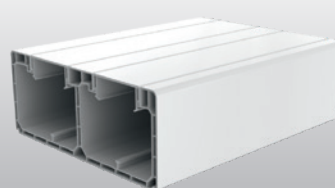
channel	end	connecting	bending	branching	inner corner	outer corner	grommet
PK 90X55 D (HF)	8401 (HF)	8402 (HF)	8403 (HF)	8404 (HF)	8405 (HF)	8406 (HF)	8407 (HF)
PK 120X55 D	8471	8472	8473	8474	8475	8476	8477
PK 160X65 D	8481	8482	8483	8484	8486	8486	8487
PK 210X70 D	8491	8492	8493	8494	8497	8496	8497



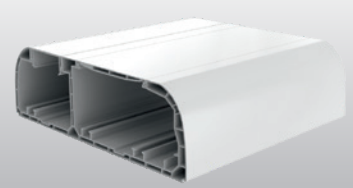
PK 90X55 D



PK 120X55 D



PK 160X65 D

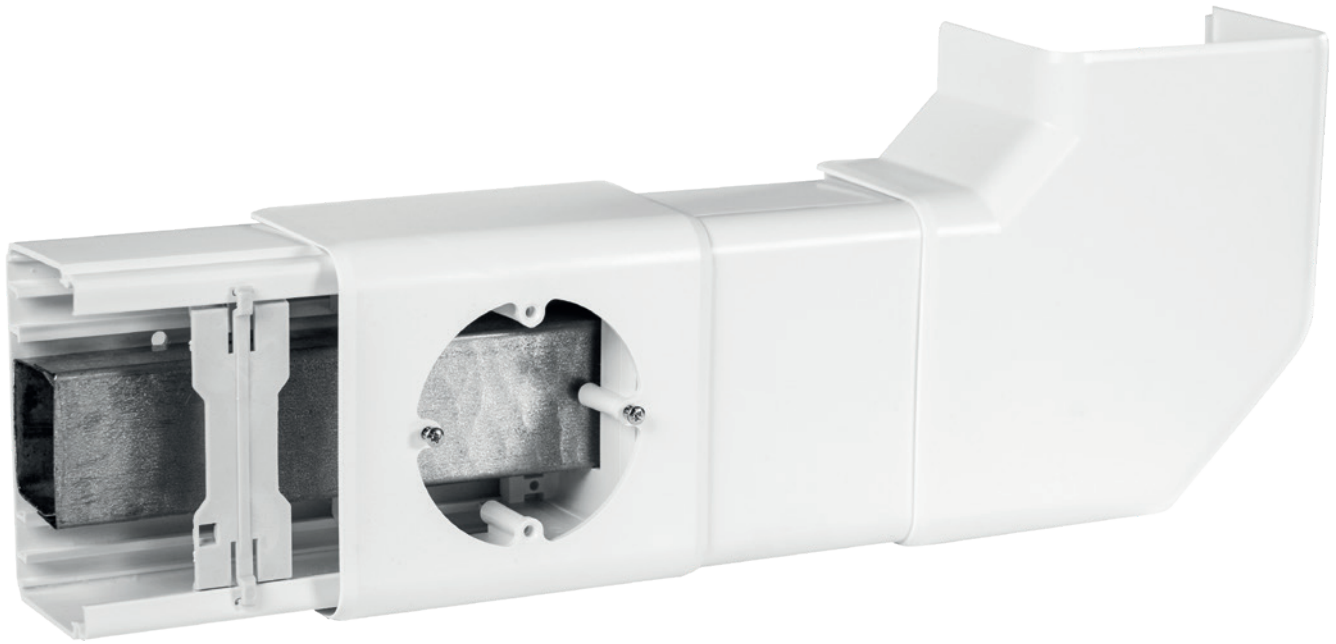


PK 210X70 D



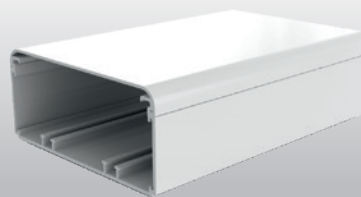
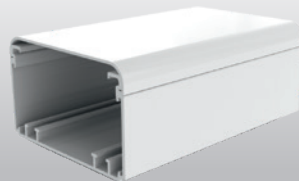
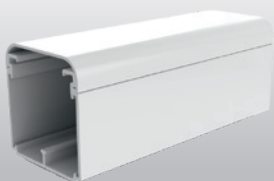
Wiring channels Elegant

EKE



- designed for classical instruments with an axial spacing of 71 mm
- installation of electrical equipment in instrument boxes KP EKE together with instrument pads
- possibility of installing a 3-phase socket in the PN EKE instrument carrier
- the possibility of separating the circuits by a shielding channel or a partition
- spacers included in the sales package, can be purchased separately

channel	end	connecting	bending	branching	inner corner	outer corner	grommet
EKE 60X60	8541	8542	8543	8544	8545	8546	REKE 60
EKE 100X60	8551	8552	8553	8554	8555	8556	REKE 100
EKE 140X60	8561	8562	8563	8564	8565	8566	REKE 140
EKE 180X60	8571	8572	8573	8574	8575	8576	REKE 180



EKE 60X60

EKE 100X60

EKE 140X60

EKE 180X60

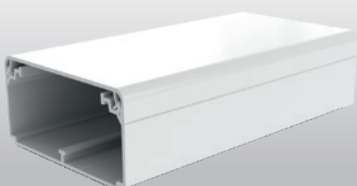
Wiring channels

EKD

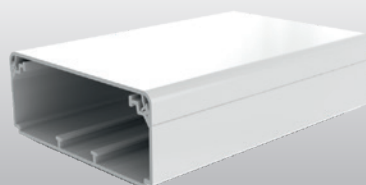


- intended only for electrical-power distribution
- spacers included in the sales package, can be purchased separately
- possibility of circuit separation by PEKD 40 partition (HF)
- adapters for connection to other EKD widths (85 ... 4 / EKD)

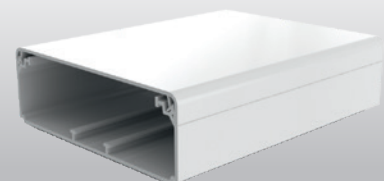
channel	end	connecting	bending	branching	inner corner	outer corner	grommet
EKD 80X40 (HF)	8501 (HF)	8502 (HF)	8503 (HF)	8504 (HF)	8505 (HF)	8506 (HF)	REKO 80X40 (HF)
EKD 100X40	8511	8512	8513	8514	8515	8516	REKO 100X40
EKD 120X40	8581	8582	8583	8584	8585	8586	REKO 120X40



EKD 80X40



EKD 100X40



EKD 120X40



INSERTION AND ANGULAR TRUNKINGS

LV and LHD



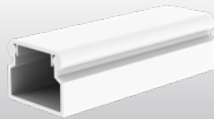
- modern simple design
- double lock as standard
- selected dimensions in color variants



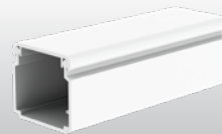
trunking	end	connecting	bending	branching	inner corner	outer corner	grommet
LV 11X10	-	-	-	-	-	-	--
LV 18X13	8731	8732	8733	8734	8735	8736	8737 8738 8739
LV 24X22	8791	8792	8793	8794	8795	8796	8797
LV 40X15	8711	8714	8716	8715	8713/2	8712/2	8717 8719
LH 15X10	8681	8682	8683	8684	8685	8686	-
LHD 17X17	8671	8672	8673	8674	8675	8676	-
LHD 20X10 (HF)	8921 (HF)	8922 (HF)	8923 (HF)	8924 (HF)	8925 (HF)	8926 (HF)	-
LHD 20X20 (HF)	8621 (HF)	8622 (HF)	8623 (HF)	8624 (HF)	8625 (HF)	8626 (HF)	8629 (HF)
LHD 25X15	8691	8692	8693	8694	8695	8696	-
LHD 25X20	8911	8912	8913	8914	8915	8916	-
LHD 30X25	8931	8932	8933	8934	8935	8936	-
LHD 32X15	8601	8602	8603	8604	8605	8606	-
LHD 40X20 (HF)	8631 (HF)	8632 (HF)	8633 (HF)	8634 (HF)	8635 (HF)	8636 (HF)	8639 (HF)
LHD 40X40 (HF)	8641 (HF)	8642 (HF)	8643 (HF)	8644 (HF)	8645 (HF)	8646 (HF)	-
LHD 50X20	8991	8992	8993	8994	8995	8996	-
LHD 50X20/1	8991	8992	8993	8994	8995	8996	-
LHD 50X20/2	8991	8992	8993	8994	8995	8996	-
LH 60X40 (HF)	8651 (HF)	8652 (HF)	8653 (HF)	8654 (HF)	8655 (HF)	8656 (HF)	-



LV 11X10



LV 18X13



LV 24X22



LV 40X15



LH 15X10



LHD 17X17



LHD 20X10 (HF)



LHD 20X20 (HF)



LHD 25X15



LHD 25X20



LHD 30X25



LHD 32X15



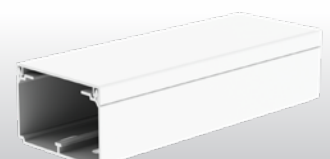
LHD 40X20 (HF)



LHD 40X40 (HF)



LHD 50X20

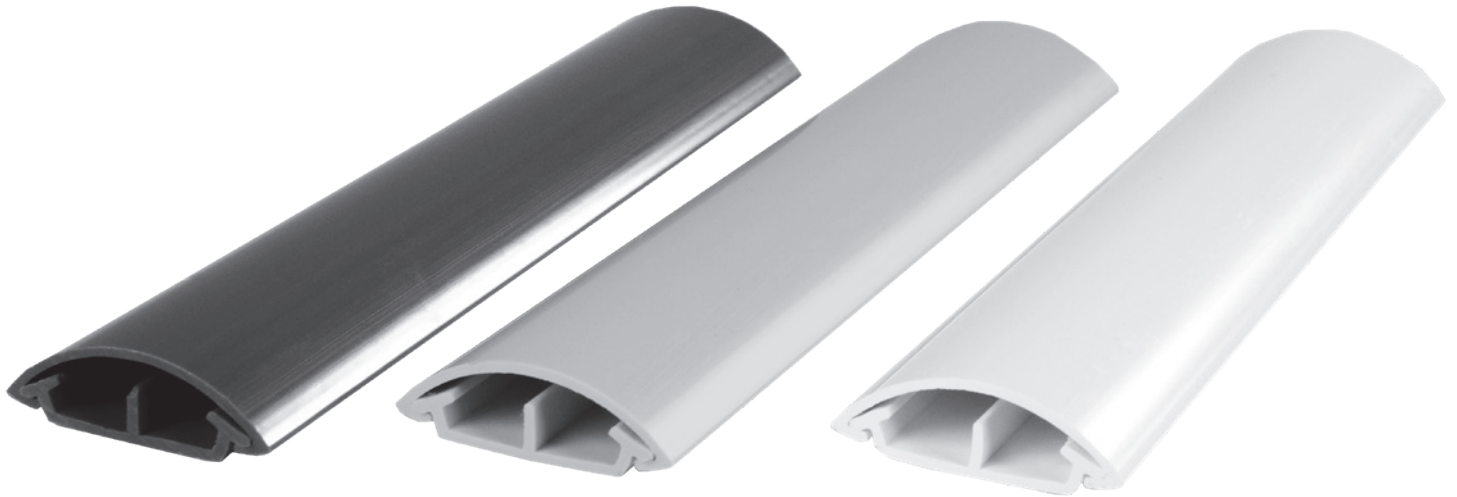


LH 60X40 (HF)



ROUND TRUNKINGS

LO

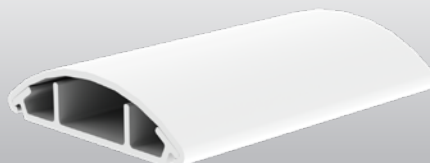


- designed for floor mounting - they are resistant to treads and normal loads of operation in the office / apartment
- higher mechanical resistance
- covers for direct passage to LK trunking boxes from LO 35 and LO 50 trunking
- variants in white, light gray and dark gray

trunking	end	connecting	bending	branching	inner corner	outer corner	grommet
LO 35	-	-	8833	8834	-	-	8837
LO 50	-	-	8843	8844	-	-	8847
LO 75	-	-	8873	8874	-	-	-



LO 35



LO 50



LO 75

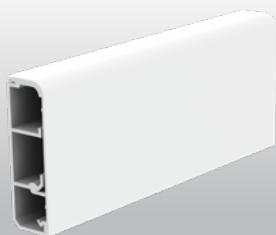
FLOOR TRUNKINGS

LP

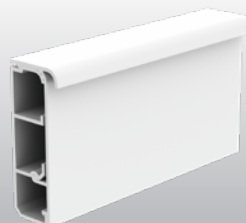


- wide range of transition covers for LP 80X25 and LPK 80X25 for branching to smaller trunkings
- LPK 80X25 with groove for sliding the carpet
- LP 35 with soft spray for adhesion to the wall
- instrument carriers for installing electrical equipment directly to the trunking

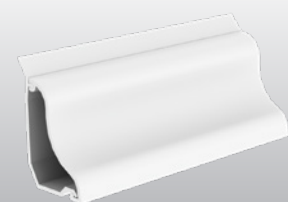
trunking	end	connecting	bending	branching	inner corner	outer corner	grommet
LP 80X25	8821 L 8821 P	8822	-	-	8825	8826	-
LPK 80X25	8821 L 8821 P	-	-	-	-	-	-
LP 35	8861 L 8861 P	-	-	-	8865	8866	-



LP 80X25



LPK 80X25



LP 35



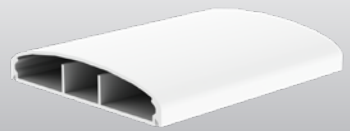
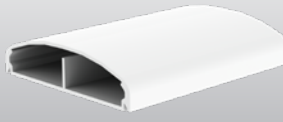
ELEGANT TRUNKINGS

LE



- elegant round lid (CZ elegantní – elegantní)
- PNE instrument carriers are available for the installation of electrical equipment directly to the trunking
- not intended for the floor - they are not resistant to treads

trunking	end	connecting	bending	branching	inner corner	outer corner	grommet
LE 40	8751	8752	8753	8754	8755	8756	8757
LE 60	8761	8762	8763	8764	8765	8766	-
LE 80	8771	8772	8773	8774	8775	8776	-
LE 100	8781	8782	8783	8784	8785	8786	-



LE 40

LE 60

LE 80

LE 100

SPECIÁLNÍ



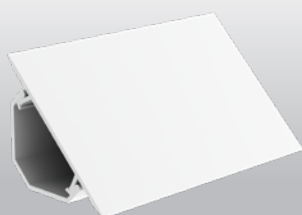
LR 30

- designed for the corners of two walls
- length 2.6m as standard room height

LZ(K) 15X12

- the lid is not fully removable - it is hinged to the trunking
- the offer includes bushing covers for LK boxes and a branch cover from LP 80X25 trunking

trunking	end	connecting	bending	branching	inner corner	outer corner	grommet
LR 30	-	-	-	-	8855 8855/3	8856	-
LZ 15X12	-	-	-	-	-	-	8819
LZK 15X12	-	-	-	-	-	-	8809



LR 30



LZ 15X12



LZK 15X12

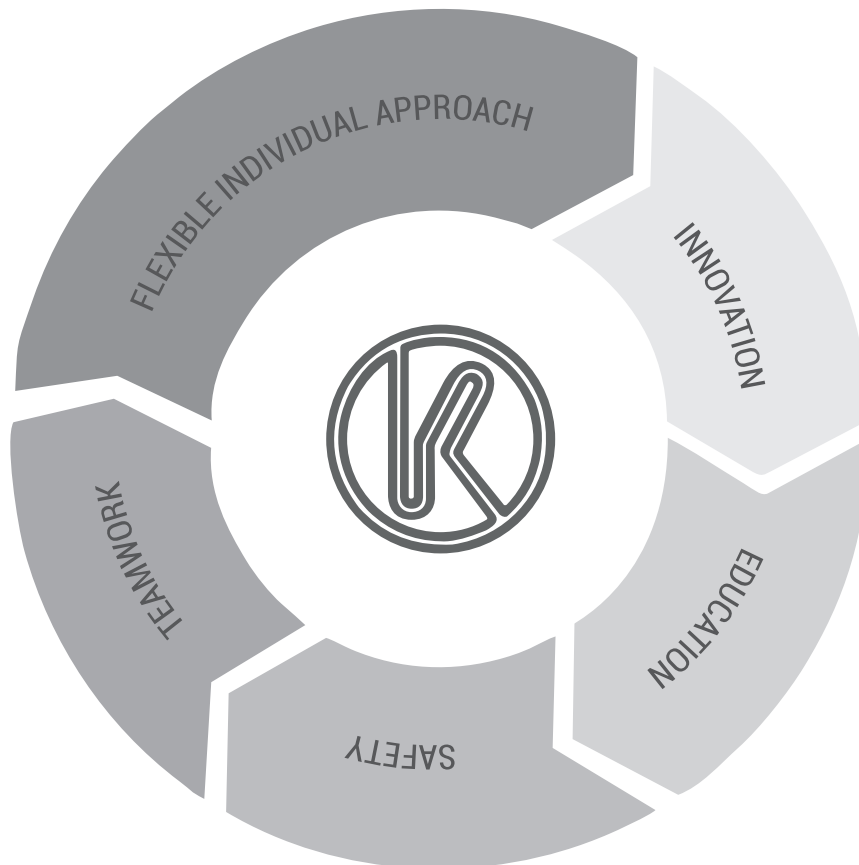
WIRING TRUNKINGS AND CHANNELS - number of inserted cables

approximate cable diameter (mm)	6	7	8	8,5	9	9,5	10	11	12	13	14	15	16
type of trunking													
LV 11X10	-	-	-	-	-	-	-	-	-	-	-	-	-
LV 18X13	3	2	1	1	1	1	1	-	-	-	-	-	-
LV 24X22	8	6	4	4	3	3	3	2	1	1	1	1	1
LV 40X15	11	8	4	4	3	3	3	3	2	2	-	-	-
LH 15X10	1	1	1 (7,5)	-	-	-	-	-	-	-	-	-	-
LHD 17X17	3	2	1	1	1	1	1	1	-	-	-	-	-
LHD 20X10 LHD 20X10HF	2	1	-	-	-	-	-	-	-	-	-	-	-
LHD 20X20 LHD 20X20HF	5	4	3	2	2	2	2	1	1	1	1	-	-
LHD 25X15	6	4	3	2	2	2	2	1	1	-	-	-	-
LHD 25X20	6	5	4	4	3	3	2	2	1	1	1	1	1
LHD 30X25	10	7	5	5	4	4	3	2	2	2	1	1	1
LHD 32X15	7	4	3	3	3	2	2	2	1	-	-	-	-
LHD 40X20 LHD 40X20HF	11	8	6	4	4	4	3	3	2	2	2	1	-
LHD 40X40 LHD 40X40HF	27	20	15	13	12	10	9	8	6	5	5	4	3
LHD 50X20	16	12	9	8	6	5	5	4	4	3	3	2	2
LHD 50X20/1	16	12	8	8	6	5	4	4	2	2	2	2	2
LHD 50X20/2	16	10	6	6	6	3	3	3	3	3	3	-	-
LH 60X40 LH 60X40HF	39	29	22	19	17	15	14	11	9	8	7	6	5
LZ 15X12	2	2	1	1	1	1	1	-	-	-	-	-	-
LZK 15X12	2	1	1	1	1	1	-	-	-	-	-	-	-
LP 80X25	28	21	15	12	11	10	10	7	5	4	4	3	3
LPK 80X25	28	21	15	12	11	10	10	7	5	4	4	3	3
LP 35	7	5	4	3	2	1	1	1	1	-	-	-	-
LR 30	11	8	6	5	5	4	4	3	2	2	2	1	1
LO 35	2	-	-	-	-	-	-	-	-	-	-	-	-
LO 50	5	2	2	-	-	-	-	-	-	-	-	-	-
LO 75	13	9	8	5	5	5	4	4	1	1	1	1	1
LE 40	10	7	5	5	4	3	3	3	2	2	1	1	1
LE 60	16	10	8	6	6	4	4	4	2	2	2	2	2
LE 80	16	12	10	8	6	6	6	4	4	2	2	2	2
LE100	23	15	12	9	9	6	6	6	3	3	3	3	3
EKD 80X40 EKD 80X40HF	51	37	29	25	22	20	18	15	12	10	9	8	7
EKD 100X40	63	46	35	31	28	25	23	18	15	13	11	10	8
EKD 120X40	84	62	47	42	37	33	30	24	21	17	15	13	11
EKE 60X60	55	40	31	27	24	21	19	16	13	11	10	8	7
EKE 100X60	97	71	54	48	43	38	35	28	24	20	17	15	13
EKE 140X60	146	109	83	74	66	59	53	43	37	30	27	23	20
EKE 180X60	190	140	107	95	84	75	68	55	47	39	35	30	26
PK 110X65 D	116	85	65	58	51	46	42	34	29	24	21	18	16
PK 110X70 D PK 110X70 D HF	116	85	65	58	51	46	42	34	29	24	21	18	16
PK 130X65 D	152	112	86	76	67	60	55	44	38	31	28	24	21
PK 140X70 D	152	112	86	76	67	60	55	44	38	31	28	24	21
PK 170X70 D	197	144	111	98	87	78	71	57	49	40	36	31	27
PK 90X55 D PK 90X55 D HF	80	59	45	40	35	32	29	23	20	16	14	12	11
PK 120X55 D	79	59	44	39	35	31	28	22	19	15	14	12	10
PK 160X65 D	156	115	88	78	68	62	56	45	39	31	28	24	21
PK 210X70 D	160	116	89	78	70	63	65	46	39	32	29	24	22

The table uses 60% of the internal cross-section of the trunkings. However, it is always necessary to take into account the method of storage and to take into account the requirements of standards ČSN 33 2000-4-43, ČSN 33 2000-4-473 and ČSN 33 2000-5-523. According to these standards, it is possible to determine the permanent current load of wires and cables while respecting their placement, mutual arrangement and ambient temperature.



COMPANY POLICY



INNOVATION

We continuously search for new ways leading to technology and products improvements.

FLEXIBLE AND INDIVIDUAL APPROACH

Our customers enjoy the complex service and their requirements are solved individually. We are building a strong and long-term business partnership.

RESPECT

We respect people as individualities. We pursue open dialogue and a common solutions. Gentleness and helpfulness promote good relationships.

TEAMWORK

We recognize the fact that each employee contributes to the company growth; only motivated and cooperating teams become successful and continuously achieve the goals.

EDUCATION

Expertise and skill enhancement are an integral part of the company strategy.

SAFETY

Environmental protection, occupational safety and health are a requirements embedded in all our company activities. We comply with the strict standards of ethics and work control.



What load can our lids withstand on the trunkings?

The standard does not specify how tightly the lid should be fixed to the trunking. We have therefore set ourselves beyond the scope of the standard, and we regularly check during production whether the lid can withstand a load of 3 kg on a trunking length of only 20 cm. For us, this is one of the indicators of quality work. This way you can be sure that the installed cables will not fall out and will be held firmly and reliably in the trunking. This is ensured by a double lock, which ensures a square shape and prevents its deformation by cables. However, the design of the lock also allows easy removal of the lid.

KOPOS KOLÍN a.s.
Havlíčková 432
280 02 Kolín IV
the Czech Republic

tel.: +420 321 730 111
e-mail: kopos@kopos.cz
www.kopos.cz