



PERFECTLY HIDDEN ENERGY



KOPOS

Electrical installation into thermal insulation

# You stand for our success.

New technologies guarantee the improvement and innovation of our products. For you.

---



# ABOUT COMPANY

KOPOS KOLIN a.s. (KOPOS KOLIN Plc) currently produces more than 5,000 items. Our products include wiring boxes, trunkings, parapet trunkings, pipes, double wall protector conduits (business mark KOPOFLEX® and KOPODUR® system), divided cable duct KOPOHALF®, and cable management systems. The company also produces environment-friendly products, for example plastic products from halogen-free and lead-free materials. Respecting the increasing demand for building safety we developed the systems with maintained functionality in fire. The first fire resistance test was conducted in 2009. The company also uses the technology for the production of shading blocks NEUTROSTOP, the product able to protect the environment from neutron radiation.

The Czech and worldwide increasing market demands motivate us to expand our business to the other countries. KOPOS products are now produced in two locations, in Kolin and Zhitomir Region in Ukraine. The company also develops foreign business activities and consolidates its market position in other parts of the world such as Lithuania, Latvia, Estonia, Denmark, France, Benelux, the United Kingdom, Sweden, Norway or the United Arab Emirates. KOPOS KOLIN a.s. employs more than 400 people, and other 170 in 11 subsidiaries. We recognize the fact that the employees of the company are the key to the success of the KOPOS brand. Generations of our employees work in various functional areas of our company.





# KEZ & KEZ 300



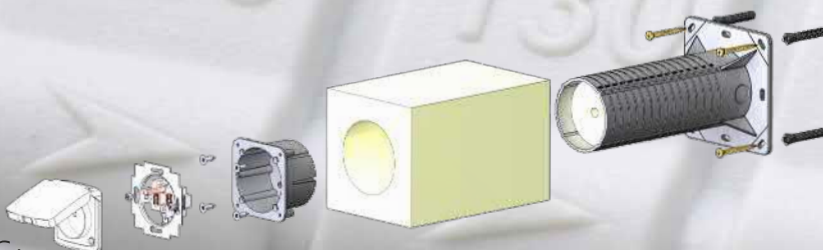
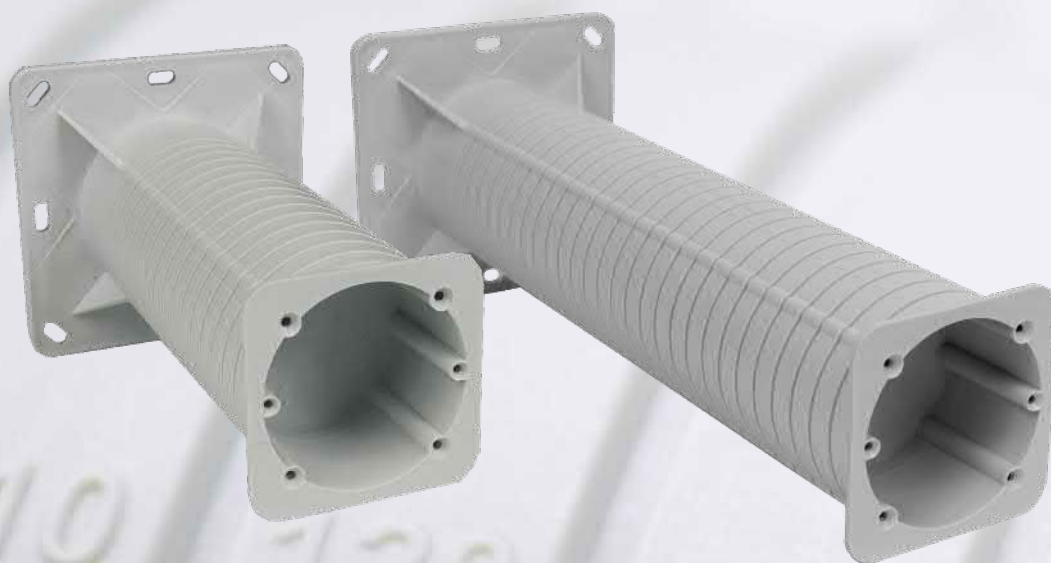
- 25 to + 60 °C



material

## wiring boxes into thermal insulation

- ▲ for device installation in insulated building facades
- ▲ eliminates thermal bridging
- ▲ suitable for common types of contact insulation (facade polystyrene, mineral wool)
- ▲ **KEZ** - for individual devices with a thermal insulation thickness of **50 - 200 mm**
- ▲ **KEZ 300** - for individual devices with a thermal insulation thickness of **50 - 300 mm**
- ▲ the package includes dowels, screws, bolts



## INSTRUCTIONS:

1. installation is done during thermal insulation installation
2. it is necessary to cut the carrier including inserted insulation before installation depending on layer thickness insulation
3. the carrier is fixed to the wall with screws and dowels depending on type of the wall surface
4. the cable is pulled through the carrier and inserts shorten insulation
5. the finally installation of box should be done by 4 added screws

Install the device with the appropriate environment cover. On a rough surface we recommend to seal the device with silicone.







material



- 25 to + 60 °C

# KEZ-3

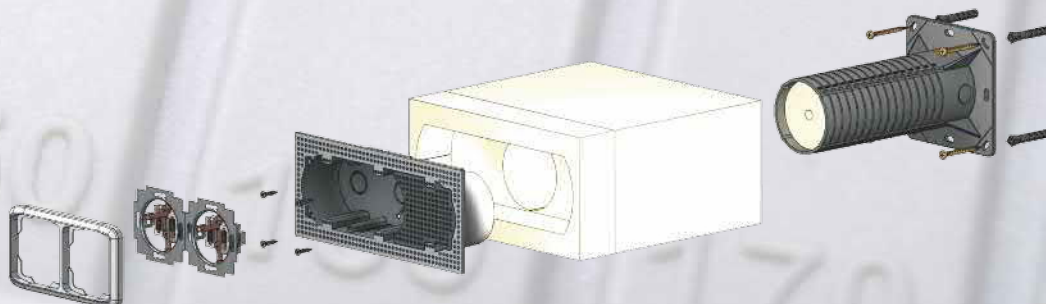


[www.kopos.com/en/video-navody](http://www.kopos.com/en/video-navody)  
VIDEO INSTRUCTIONS



## multiple wiring boxes into thermal insulation

- for device installation in insulated building facades ▶
- eliminates thermal bridging ▶
- suitable for common types of contact insulation (facade polystyrene, mineral wool) ▶
- for double or tripled device installation in insulated building facades with a thickness from 100 - 250 mm ▶
- the package includes dowels, screws, bolts ▶



### INSTRUCTIONS:

1. installation is done during thermal insulation installation
2. the carrier is fixed to the wall with screws and dowels depending on type of the wall surface
3. the cable is pulled through the carrier and inserts shorten insulation
4. the finally installation of box should be done by 4 added screws
5. for installation of 400 V plug we recommend chemical anchors

Install the device with the appropriate environment cover. On a rough surface we recommend to seal the device with silicone.

Electrical installation into thermal insulation



# KUZ



44



- 25 to + 60 °C



material



material

## universal box not only into thermal insulation

- ▲ installation under parget and also into thermal insulation
- ▲ adjustable depth of the boxes exactly according to the needs of the particular solution
- ▲ the size of the box is 196 x 156 x 85 mm, when it is extended to a maximum depth of 196 x 156 x 140 mm
- ▲ the size of the lid is 210 x 170 mm

Two types of lids:

- ▲ opening lid (opening without tool, special spring and klik dak lock)
- ▲ basic fixed lid

### Can be used to install:



up to two devices



three-phase sockets



circuit breakers



water tap



lightning rods clamps



**KUZ-V**

[www.kopos.com/en/video-navody](http://www.kopos.com/en/video-navody)

**VIDEO INSTRUCTIONS**



**KUZ-VO**

[www.kopos.com/en/video-navody](http://www.kopos.com/en/video-navody)

**VIDEO INSTRUCTIONS**



**KUZ-VI**

[www.kopos.com/en/video-navody](http://www.kopos.com/en/video-navody)

**VIDEO INSTRUCTIONS**



**KUZ-VOI**

[www.kopos.com/en/video-navody](http://www.kopos.com/en/video-navody)

**VIDEO INSTRUCTIONS**

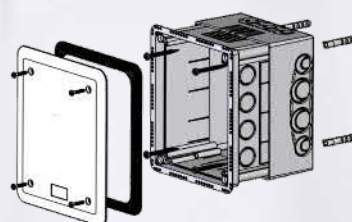
The assembly includes a mounting plate. This allows, e.g. installation of classical devices, which are safely hidden under the opening lid when placed in a thermal coat of the building. The lids cover the IP 30 enclosure. However, when using the seal provided in each assembly, the IP 44 provides protection.



[www.kopos.com](http://www.kopos.com)

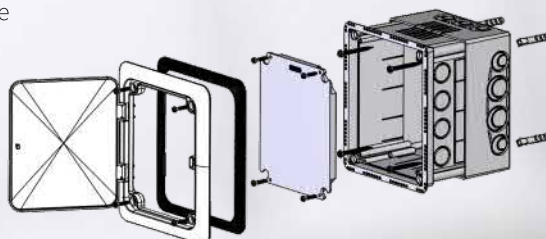
## KUZ-V

- ▲ fixed lid
- ▲ designed for installation into exterior plaster under parget and for direct installation in insulating materials for building insulation
- ▲ depth adjustment in the range of 85 to 140 mm



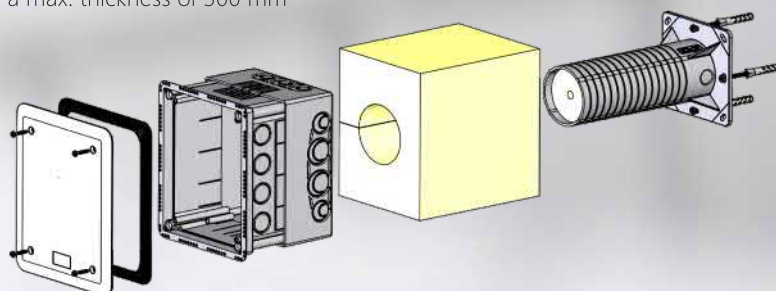
## KUZ-VO

- ▲ opening lid
- ▲ opening without using a tool
- ▲ suitable for mounting classical devices hidden under the wall surface



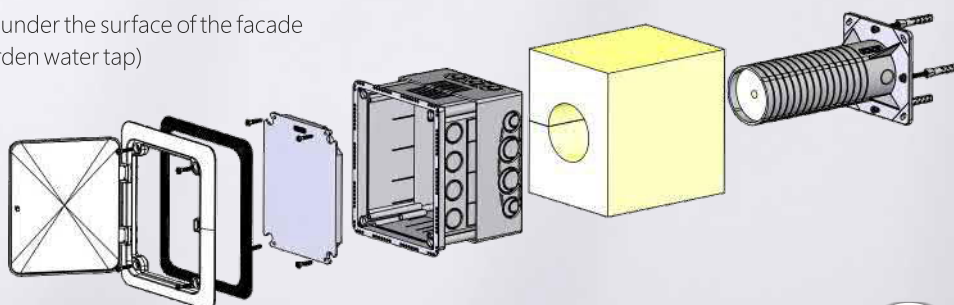
## KUZ-VI

- ▲ into thermal insulation systems
- ▲ fixed lid
- ▲ assembly with supporting tubing, outer and inner insulation, package for installation
- ▲ use for thermal insulation with min. thickness of 120 mm and a max. thickness of 300 mm
- ▲ bottom of the box heat-insulated from the base wall
- ▲ eliminates thermal bridging



## KUZ-VOI

- ▲ into thermal insulation systems
- ▲ opening lid
- ▲ assembly with supporting tubing, outer and inner insulation, package for installation
- ▲ use for thermal insulation with min. thickness of 120 mm and a max. thickness of 300 mm
- ▲ eliminates thermal bridging
- ▲ it is suitable for installation of devices embedded under the surface of the facade (socket switches, three-phase sockets, hiding garden water tap)







# MDZ & MDZ 300

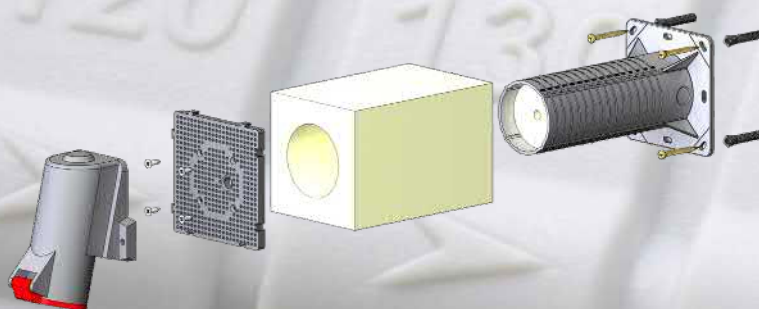
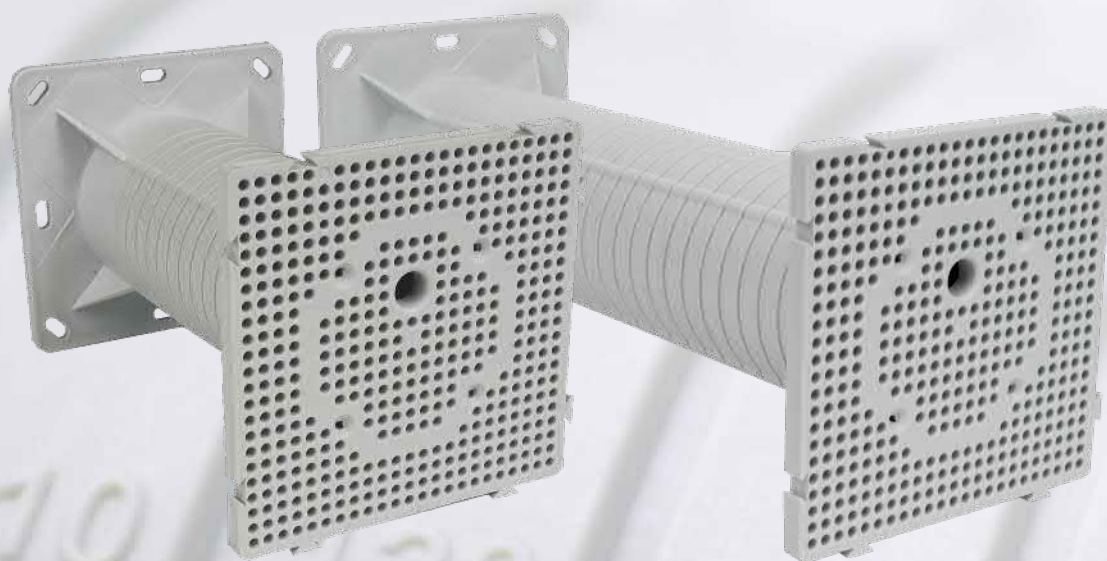


- 25 to + 60 °C material



## mounting desk into thermal insulation

- ▲ for fixed attachment of devices to insulated facades of buildings (outdoor lights, motion sensors, 400 V sockets)
- ▲ eliminates thermal bridging
- ▲ suitable for common types of contact insulation (facade polystyrene, mineral wool)
- ▲ **MDZ** - possible installation of the device at a thickness of **50 - 200 mm**
- ▲ **MDZ 300** - possible installation of the device at a thickness of **50 - 300 mm**
- ▲ can be connected to any mounting area
- ▲ the package includes dowels, screws, bolts
- ▲ dimension 119 x 119 mm



## INSTRUCTIONS:

1. installation is done during thermal insulation installation
2. it is necessary to cut the carrier including inserted insulation before installation depending on layer thickness insulation
3. the carrier is fixed to the wall with screws and dowels depending on type of the wall surface
4. the cable is pulled through the carrier and inserts shorten insulation
5. the finally instalation of box should be done by 4 added screws
6. for installation of 400 V plug we recommend chemical anchors







material



- 25 to + 60 °C

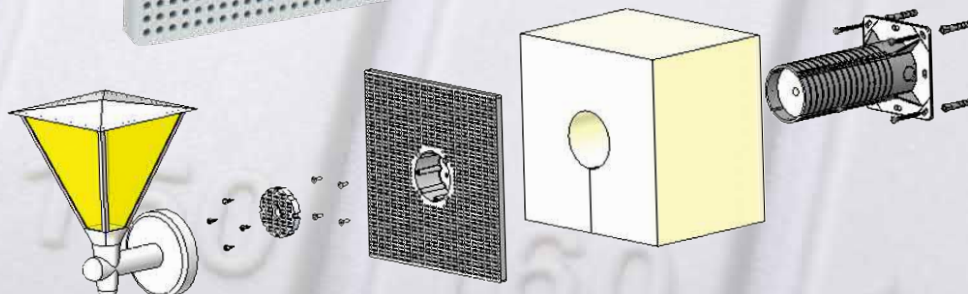
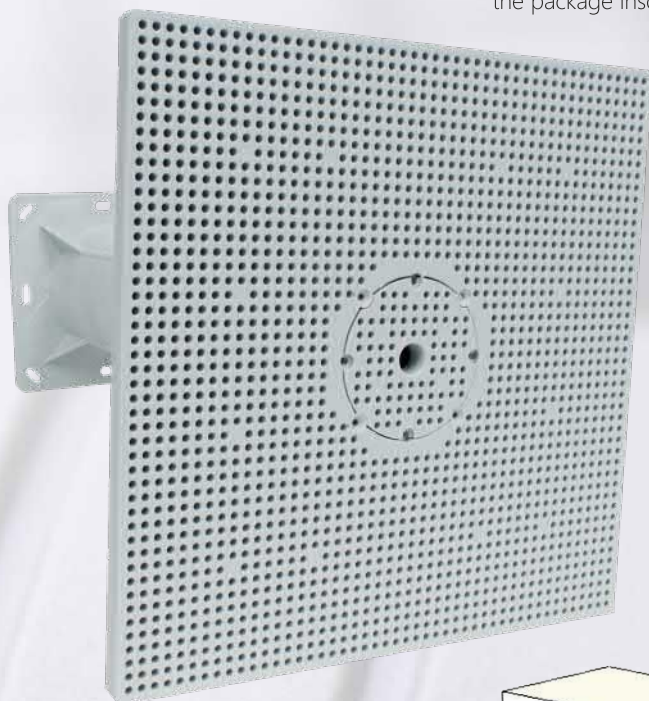
# MDZ XL & MDZ XL 300

MDZ XL MDZ XL 300  
www.kopos.com/en/video-navody  
VIDEO INSTRUCTIONS



## mounting desk into thermal insulation

- for fixed attachment of devices to insulated facades of buildings (outdoor lights, motion sensors, 400 V sockets) ▲
- eliminates thermal bridging ▲
- suitable for common types of contact insulation (facade polystyrene, mineral wool) ▲
- MDZ XL** - possible installation of the device at a thickness of **50 - 200 mm** ▲
- MDZ XL 300** - possible installation of the device at a thickness of **50 - 300 mm** ▲
- contains an integrated box designed especially for clamping, ▲
- but can be used as a classic box under the switch or socket ▲
- the package includes dowels, screws, bolts ▲
- dimension 238 x 238 mm ▲



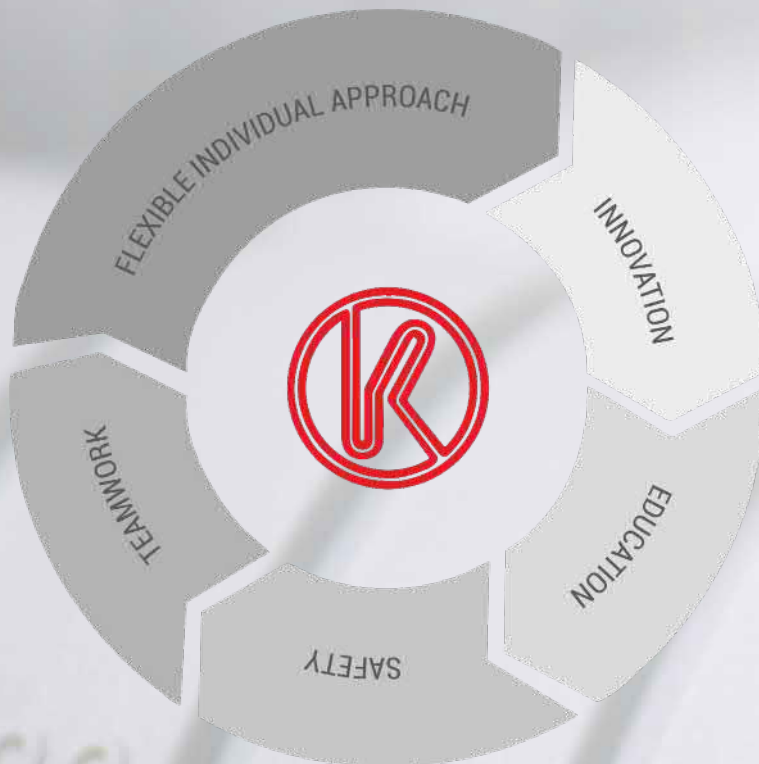
## INSTRUCTIONS:

1. installation is done during thermal insulation installation
2. it is necessary to cut the carrier including inserted insulation before installation depending on layer thickness insulation
3. the carrier is fixed to the wall with srveus and dowels depending on type of the wall surface
4. the cable is pulled through the carrier and inserts shorten insulation
5. the finally instalation of box should be done by 4 added screws
6. for installation of 400 V plug we recommend chemical anchors



# COMPANY POLICY

---



## INNOVATION

We continuously search for new ways leading to technology and products improvements.

## FLEXIBLE AND INDIVIDUAL APPROACH

Our customers enjoy the complex service and their requirements are solved individually. We are building a strong and long-term business partnership.

## RESPECT

We respect people as individualities. We pursue open dialogue and a common solutions. Gentleness and helpfulness promote good relationships.

## TEAMWORK

We recognize the fact that each employee contributes to the company growth; only motivated and cooperating teams become successful and continuously achieve the goals.

## EDUCATION

Expertise and skill enhancement are an integral part of the company strategy.

## SAFETY

Environmental protection, occupational safety and health are a requirements embedded in all our company activities. We comply with the strict standards of ethics and work control.

We determine the trend in the development of the wiring material.



**KOPOS KOLÍN a.s.**  
[www.kopos.com/en/video-navody](http://www.kopos.com/en/video-navody)  
ABOUT COMPANY

**www.kopos.com**



PERFECTLY HIDDEN ENERGY

**[www.kopos.com](http://www.kopos.com)**

KOPOS KOLÍN a.s.  
Havlíčkova 432  
280 94 Kolín IV  
Česká republika

tel.: +420 321 730 111  
e-mail: [kopos@kopos.cz](mailto:kopos@kopos.cz)  
[www.kopos.cz](http://www.kopos.cz)