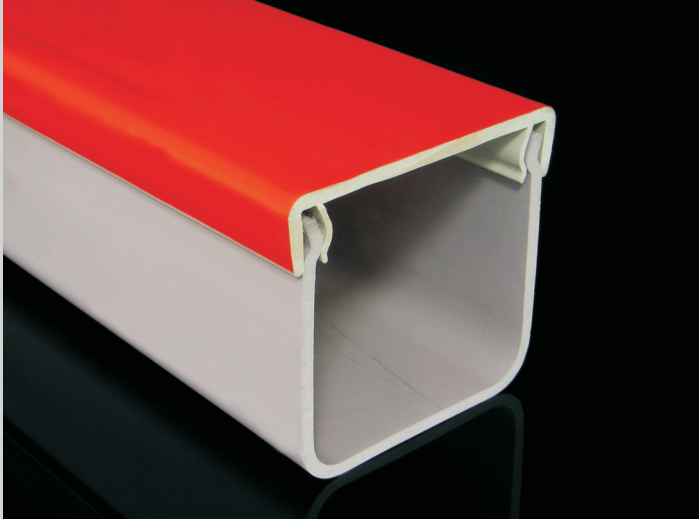




Earthen Channel KOPOKAN



Earthen Channels are intended for mechanical protection of distribution of engineering networks to be fitted into the ground.

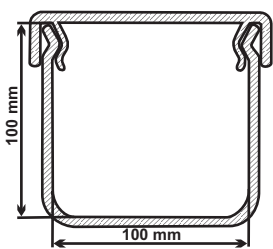
By its technical parameters they fully replace the previously used concrete conduits. They are used for additional protection already installed engineering networks.

Earthen Channels are delivered in different dimensions, including the lid to be equipped by red printing (with temporary exception at KOPOKAN 4).

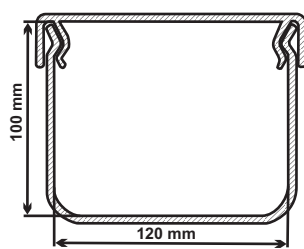
Earthen Channels KOPOKAN are characterized by the following features:

- lifetime min. of 30 years at the storage in the ground
- solid and demountable connection of the lid and the channel body
- temperature range for manipulation of - 25°C till 70°C
- stability of description resolution for whole period of lifetime
- non-absorbability, heavy fuel (Class B3), physiologically passive and fully recyclable

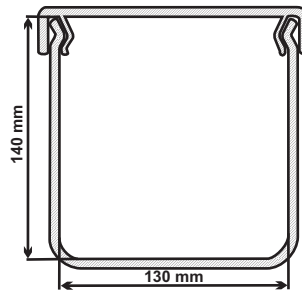
	inner width (mm)	inner height (mm)	length (m)	compressive strength limit (kPa)	packing	
					m	kg
KOPOKAN 1	100	100	2	483	324	1312
KOPOKAN 2	120	100	2	223	252	847
KOPOKAN 3	130	140	2	285	224	1180
KOPOKAN 4	200	125	2	204	140	883



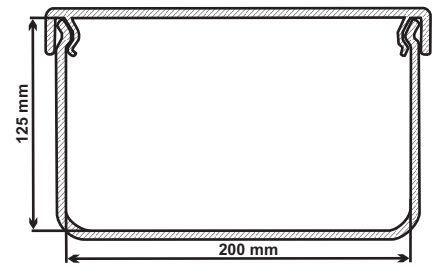
KOPOKAN 1



KOPOKAN 2



KOPOKAN 3



KOPOKAN 4

For connection of two channels there are used the couplings to be made for each dimension of Earthen Channel.

	width (mm)	height (mm)	length (mm)	packing	
				pcs	kg
CONNECTION 1	120	80	100	10	1,1
CONNECTION 2	138	80	100	10	1,2
CONNECTION 3	151	80	100	10	1,3
CONNECTION 4	221	80	100	10	1,6

